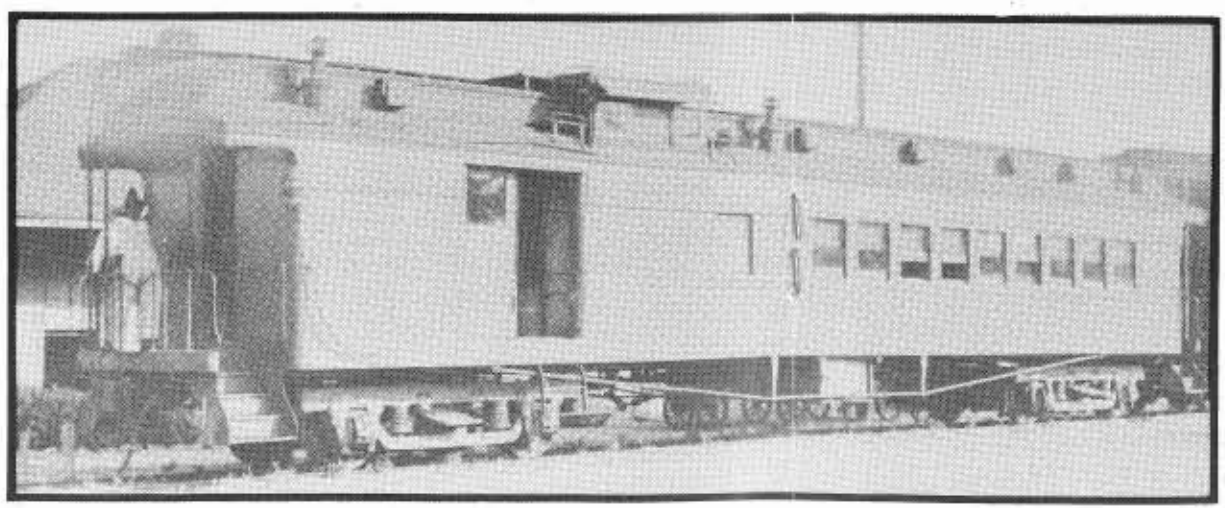


Which ever one it was, it too was rebuilt as a Coach-Caboose Combination in August 1935, identical to No. 843. In May 1946, steel sheathing was installed and in May 1953, steel trucks were applied at Springfield, MO. In March 1957, #844 was dismissed from service and on May 14, 1957, it was dismantled and sold for scrap.

It should be noted that 843 and 844 may not have been the only Coach-Caboose in service. A.F.E. (Authorization For Expenditure) records for 1926 indicate that coach #583, a 51'6" car built by Pullman in September, 1882, was "converted to caboose #841." Similar records for 1936 state that Frisco Tool & Maintenance Car #102419, ex-120000 series box car, was exchanged for a Ft. Worth & Rio Grande Coach Caboose #862, a 60' car built by Pullman in 1891. No additional records of these two cars are currently available. □



Coach-Caboose #844 Walnut Ridge, AR  
 Otto Perry photo Reprinted with permission by Kachina Press from Frisco Southwest, 1982

843 - 844  
 CAR NUMBERS  
 SL-SF. RY. CO.  
 COACH CABOOSE