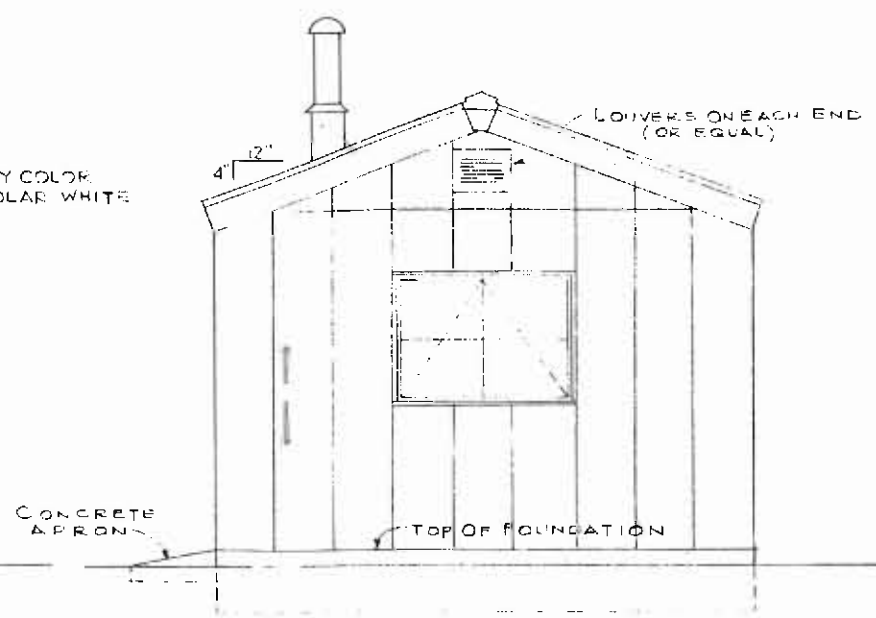
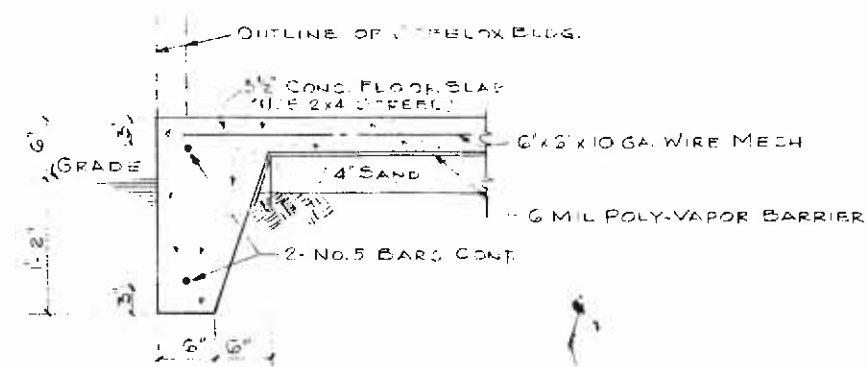


FRONT ELEVATION
SCALE 3/8" = 1'-0"

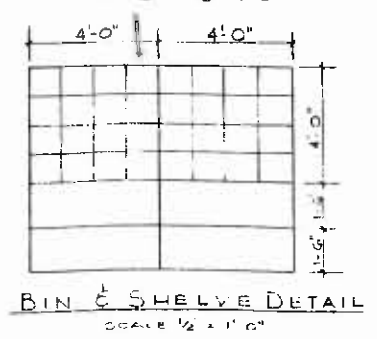
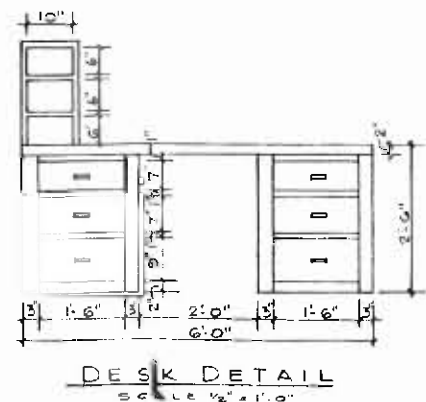
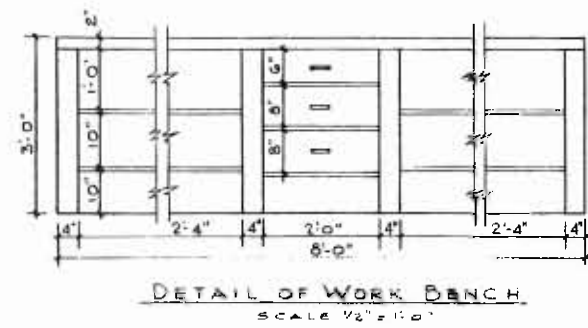
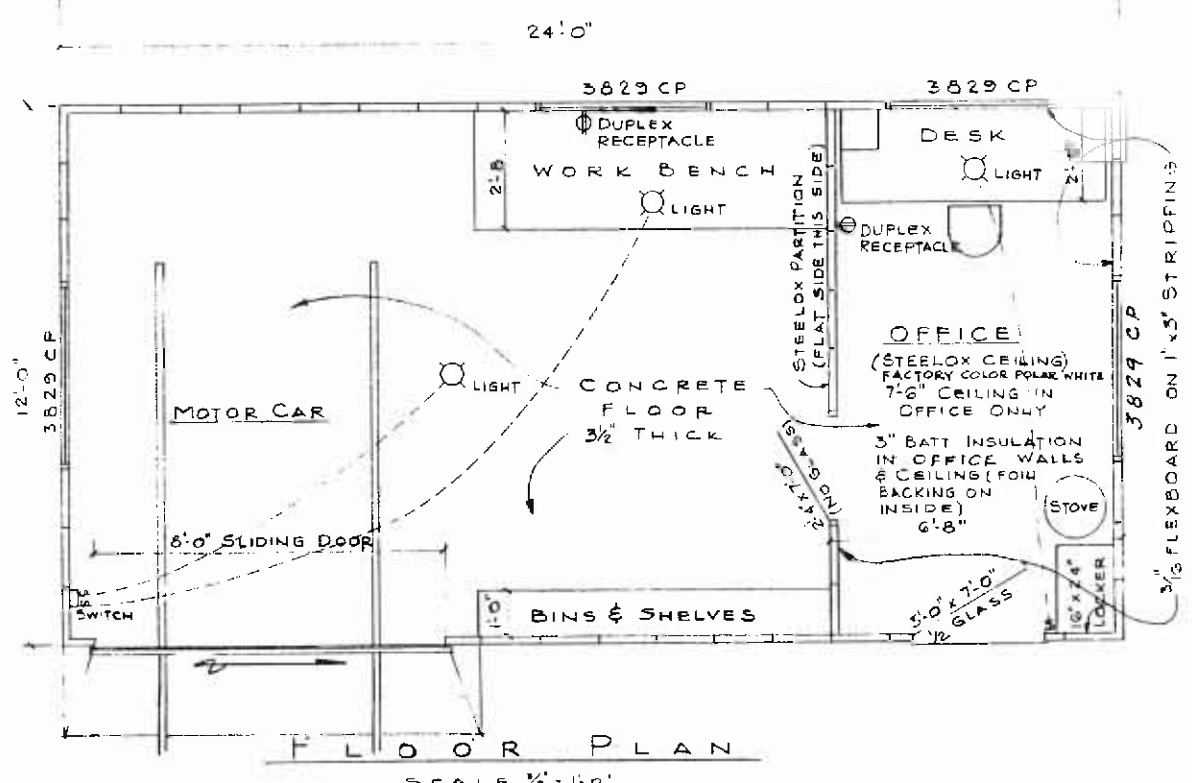


RIGHT END ELEVATION
SCALE 3/8" = 1'-0"



FOUNDATION DETAIL
SCALE 1" = 1'-0"

- NOTES:
1. DOORS TO BE EQUIPPED WITH HASP IN ORDER THAT STANDARD SIGNAL LOCK MAY BE USED.
 2. BUILDING TO BE FACTORY PREPARED ON EXTERIOR ACCORDING TO THE COLOR STANDARDS.
 3. STORAGE SHELF, WORK BENCH, & DESK TO BE FURNISHED BY RAILROAD. (AS REQUIRED)
 4. BUILDING TO BE EQUIPPED WITH STANDARD LOUVERS EACH END (OR EQUAL)
 5. ALL WINDOWS TO PROJECT OUTWARD.



This is the third in our **Standard Plans** series that features reprints of original Frisco standard plan designs. This installment is a December 8, 1971, Frisco design for a Prefabricated Steel Signal Maintainers Tool House.

ST. LOUIS SAN FRANCISCO RAILWAY CO.	
STANDARD PREFABRICATED STEEL SIGNAL MAINTAINERS TOOL HOUSE	DRAWN BY JEH TRACED FEC CHECKED DATE REVISED
OFFICE OF ARCHITECT ST. LOUIS, MISSOURI	DATE 12-8-71 FILE NO. 20-78
No. 14472	