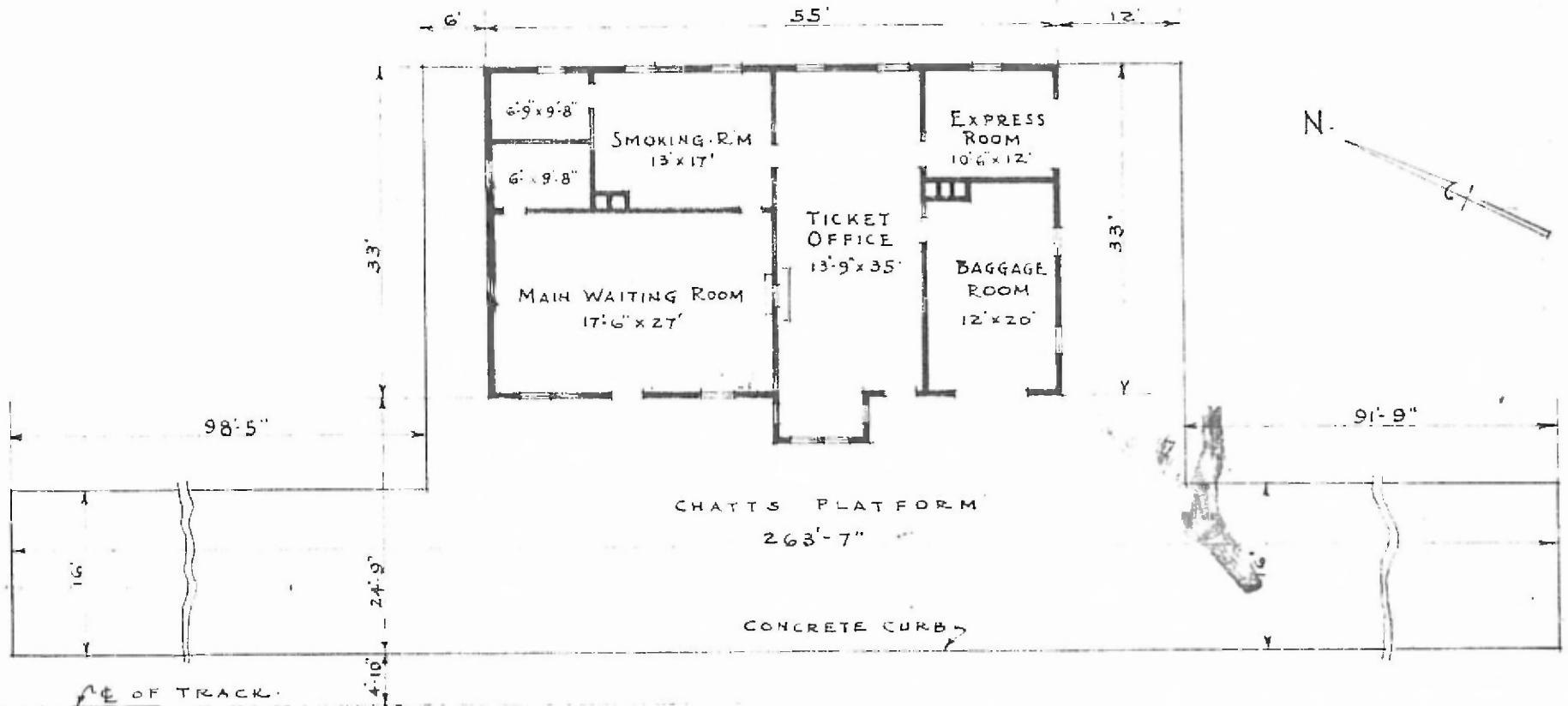


ERECTED 1914
 TYPE FRAME-STUCCO
 FOUNDATION CONCRETE
 WALLS 2' x 6'
 ROOF TYPE - FLAT - BUILT UP.
 PITCH
 HEATING STOVES

FLOOR FINISH { INSIDE
 OUTSIDE
 CEILING HEIGHT 11'-9"
 LIGHTING OIL LAMPS.
 SANITARY FACILITIES OUTSIDE TOILETS.

CONCRETE - $\frac{7}{8}$ " x 2 1/2" T. & G.
 PLASTER
 STUCCO.

EASTERN DIV
 CLINTON 50
 PLAN NO. D 131
 95



FLOOR PLAN
 SCALE: 1/16" = 1'-0"

PASSENGER STATION AT
 BOLIVAR MO.