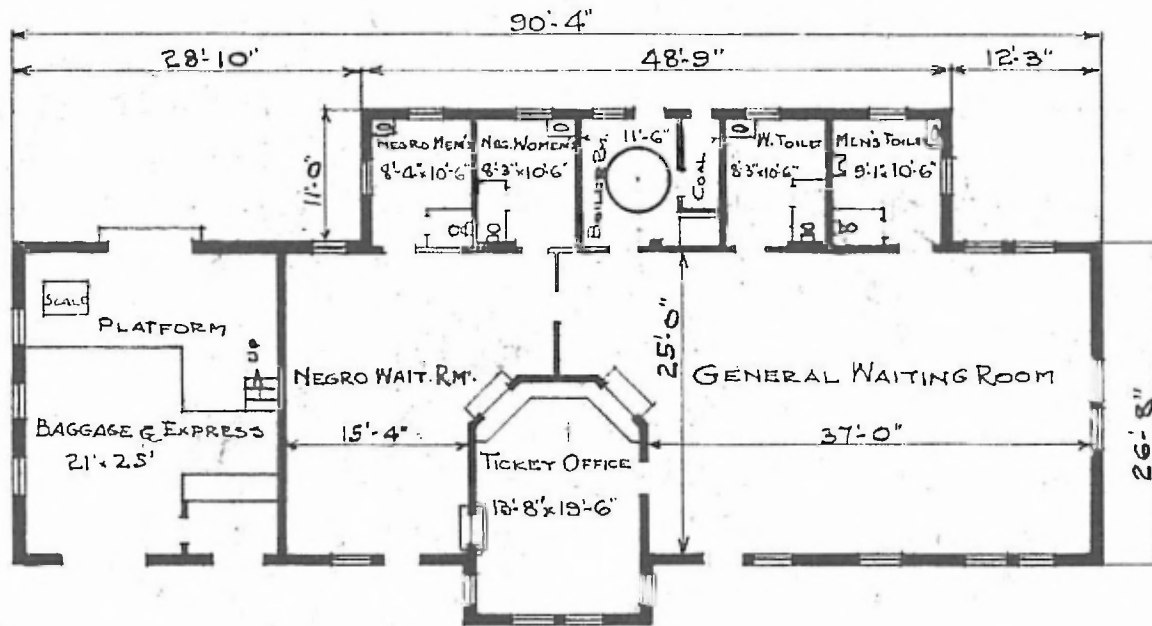


ERECTED 1914
 TYPE HOLLOW TILE
 FOUNDATION CONCRETE
 WALLS TILE & STUCCO
 ROOF { TYPE FLAT COMPOSITION ROOF.
 PITCH $\frac{3}{4}$ TO 1:0"
 HEATING HOT WATER

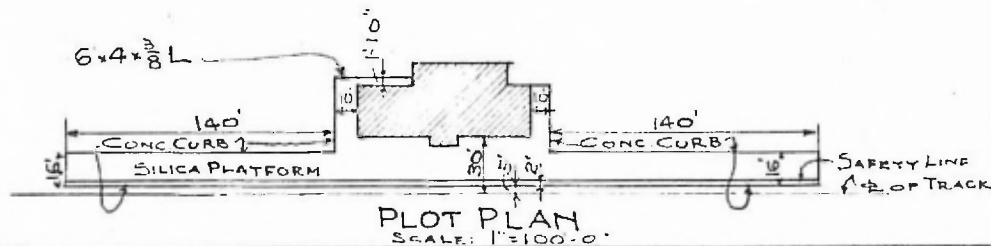
FLOOR
 FINISH { INSIDE
 OUTSIDE
 CEILING HEIGHT
 LIGHTING
 SANITARY FACILITIES

RIVER DIV. LEACHVILLE SUB
 CEMENT PLASTER STA. N. T. X 220
 STUCCO
 10'-6" OFFICE-WAIT. RMS = 11'-6"; BAGG. = 12'-2"
 ELECTRIC
 INSIDE TOILETS

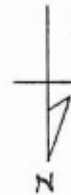
113



FLOOR PLAN
 SCALE: $\frac{1}{16}'' = 1'-0''$



PLOT PLAN
 SCALE: 1" = 100'-0"



PASSENGER STATION
 CARUTHERSVILLE, MO.