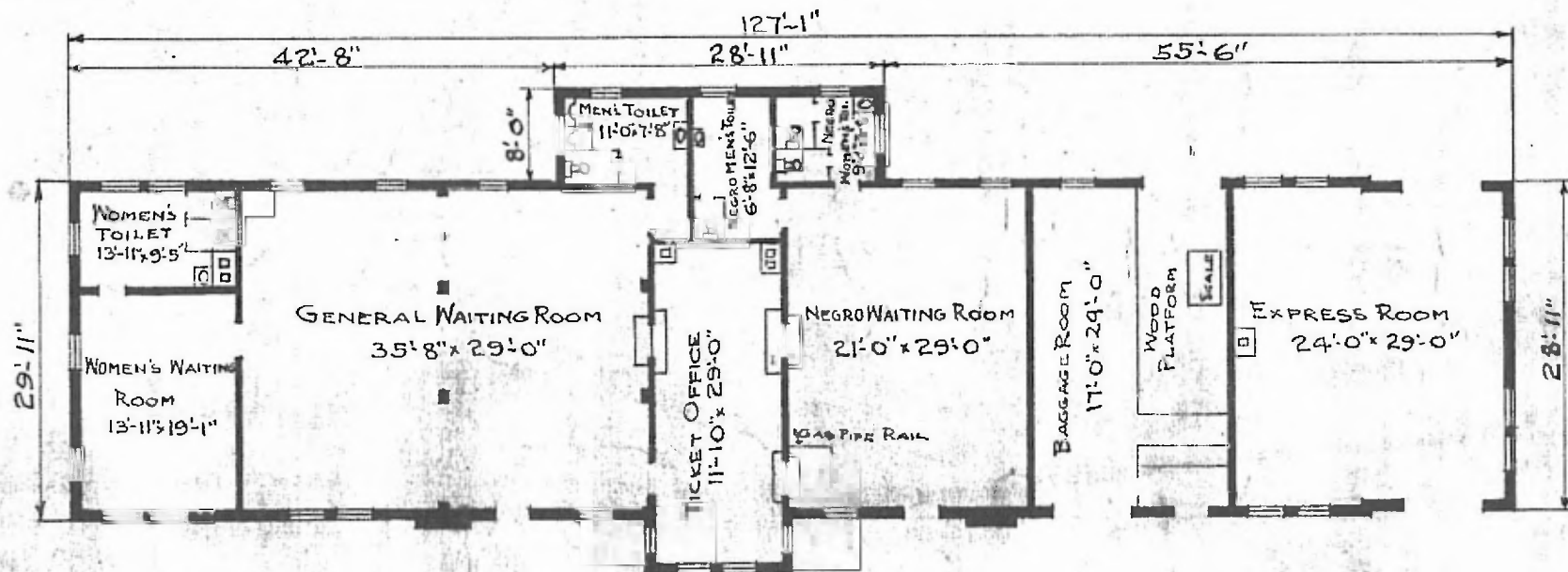


ERECTED 1913
 TYPE FRAME
 FOUNDATION CONCRETE
 WALLS 2x6" STUDS
 ROOF { TYPE FLAT COMPOSITION ROOFING
 PITCH 3/4" TO 1'-0"
 HEATING 3 STOVES

FLOOR WOOD
 FINISH { INSIDE PLASTER
 OUTSIDE STUCCO
 CEILING HEIGHT 11'-0"
 LIGHTING ELECTRIC
 SANITARY FACILITIES FUTURE INSIDE TOILETS

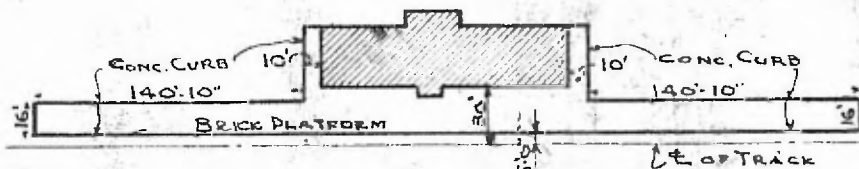
RIVER DIV.
 CHAFFEE SUB
 STA No. T 213

37

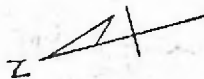


PLANS IN OFFICE

FLOOR PLAN
 SCALE: 1/16" = 1'-0"



PLOT PLAN
 SCALE: 1" = 100'



PASSENGER STATION
 HAYTI, MO.