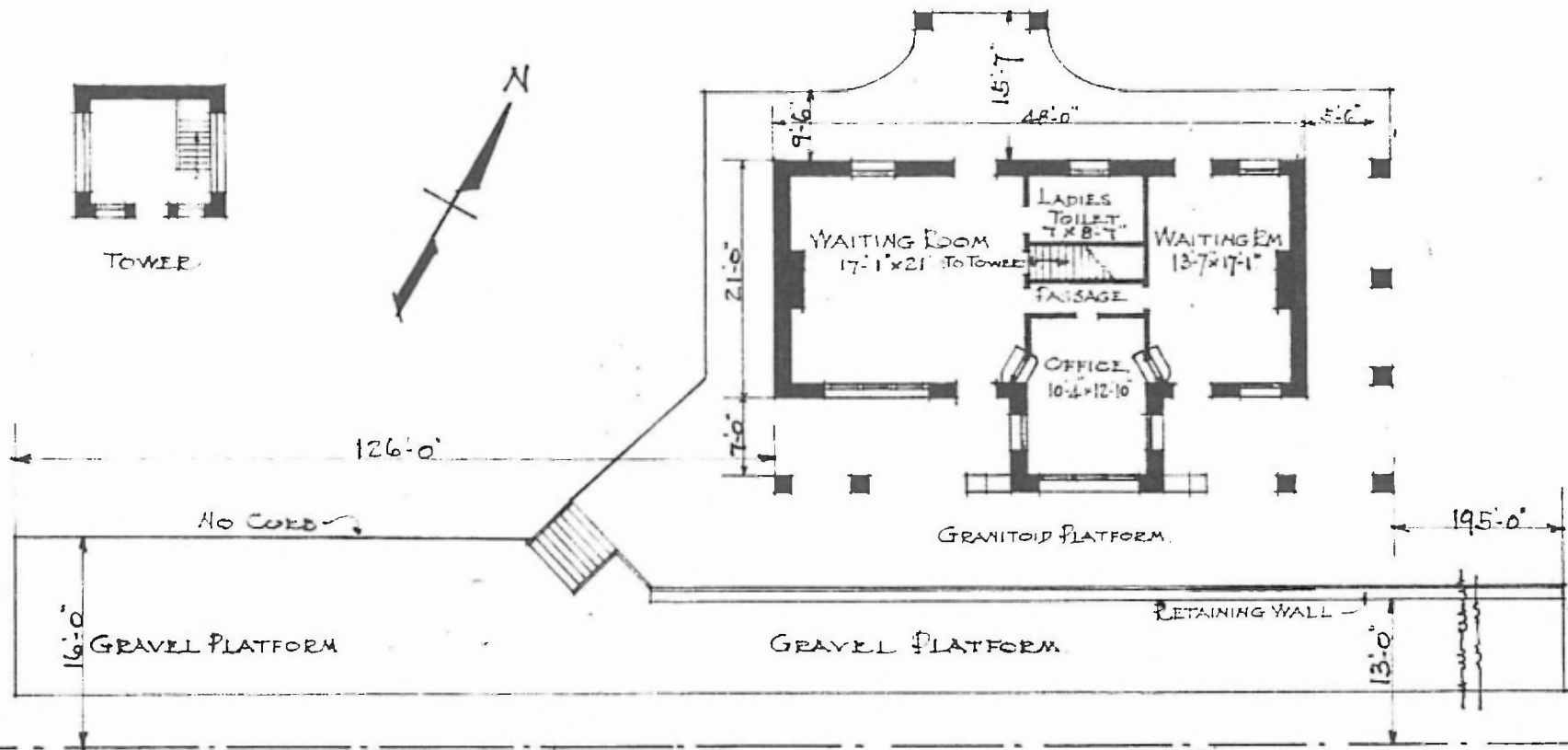


ERECTED 1885.
 TYPE. STONE
 FOUNDATION. STONE.
 WALLS. STONE
 ROOF { TYPE HIF. SHINGLE.
 PITCH. $\frac{1}{3}$
 HEATING STOVE.

FLOOR $\frac{7}{8} \times 3\frac{1}{2}$ PINE.
 FINISH { INSIDE. PLASTER
 OUTSIDE. PITCH FACE.
 CEILING-HEIGHT. 11'-0"
 LIGHTING LAMPS.
 SANITARY FACILITIES. INSIDE.

EASTERN DIV.
 ROLLA SUB
 STA. No. 15



FLOOR PLAN
 SCALE $\frac{1}{16}$ " = 1'-0"

PASSENGER STATION
 MERAMEC HIGHLANDS, MO.