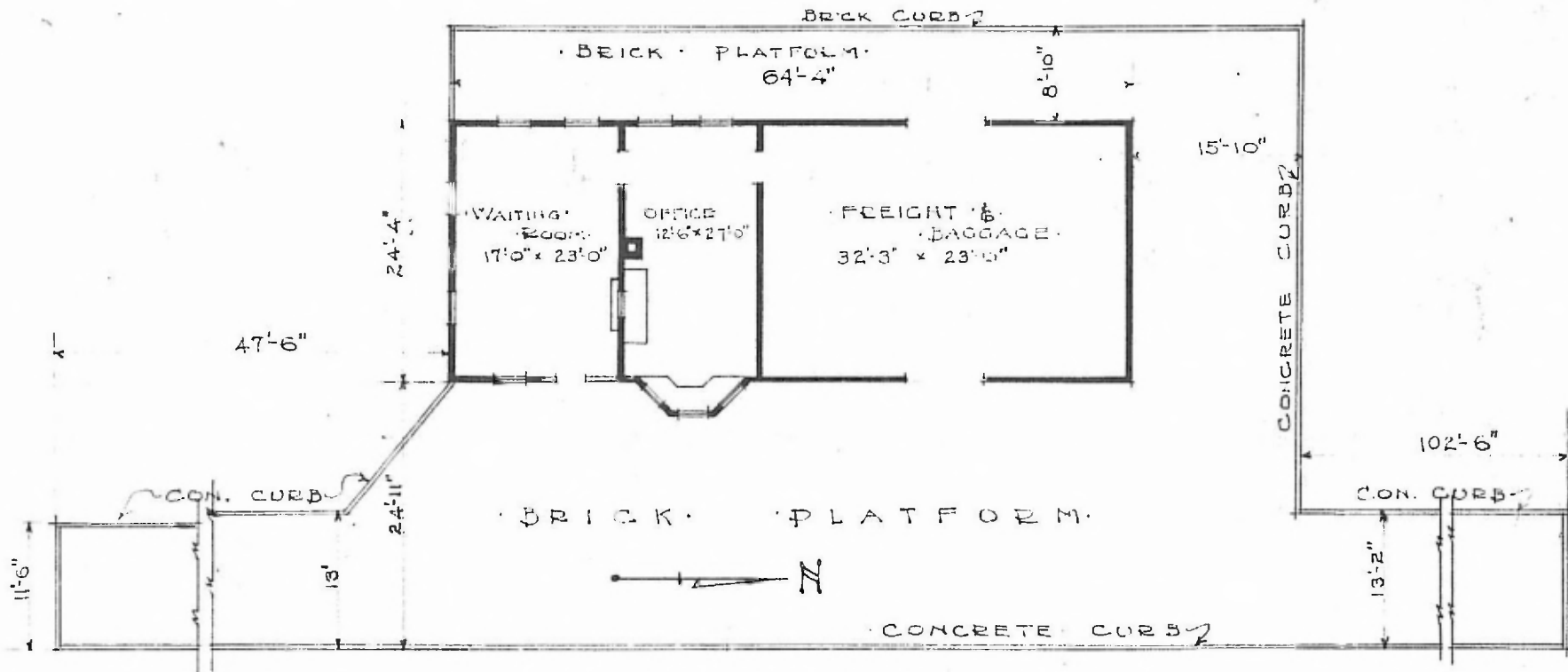


ERECTED 1916
 TYPE FRAME
 FOUNDATION CONCRETE
 WALLS 2" x 6"
 ROOF TYPE: Hip, CHINGLES
 PITCH: $\frac{1}{3}$
 HEATING STOVES

FLOOR: $\frac{3}{4}$ " x $3\frac{1}{4}$ " Y.P.
 FINISH: INSIDE: $\frac{3}{4}$ " x $3\frac{1}{4}$ " M.&D.
 OUTSIDE: STD.
 CEILING HEIGHT: 11'-6"
 LIGHTING: OIL LAMPS
 SANITARY FACILITIES: OUTSIDE TOILETS

NORTHERN PIV.
 ASP GROVE SUB
 STATION No. C166

65



FLOOR PLAN
 SCALE $\frac{1}{16}$ " = 1'-0"

COMBINATION STATION
 SOUTH GREENFIELD MO.

MAY 5, 1917.