

SECOND FLOOR PLAN.
 SCALE $\cdot \frac{1}{16} \cdot 1" = 0'$

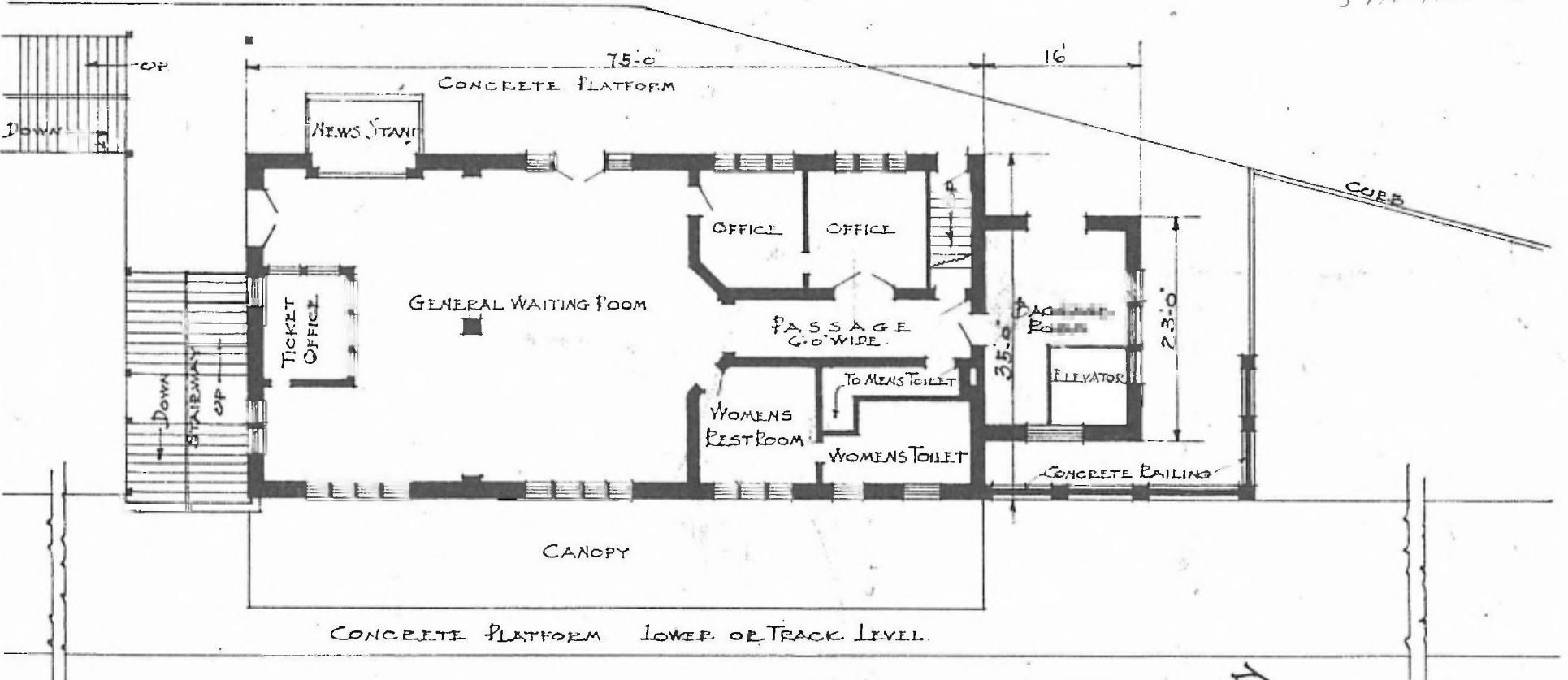
ERECTED	1903. EXT'D 1915
TYPE	BRICK
FOUNDATION	CONCRETE.
WALLS	
ROOF { TYPE	HIP. TILE
{ PITCH	
HEATING	STEAM.

FLOOR	CONCRETE. 2 ND PINE
FINISH	INSIDE - PLASTER
	OUTSIDE - BRICK.
CEILING HEIGHT	
LIGHTING	ELECTRIC
SANITARY FACILITIES	INSIDE TOILETS.

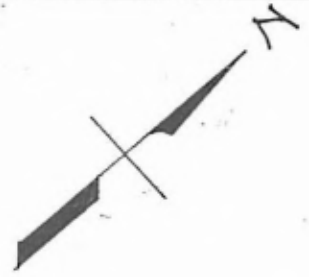
PASSENGER STATION
 TOWER GROVE (St. Louis, Mo)

2

EASTERN DIV.
ROLLA SUB
STA. No. 3



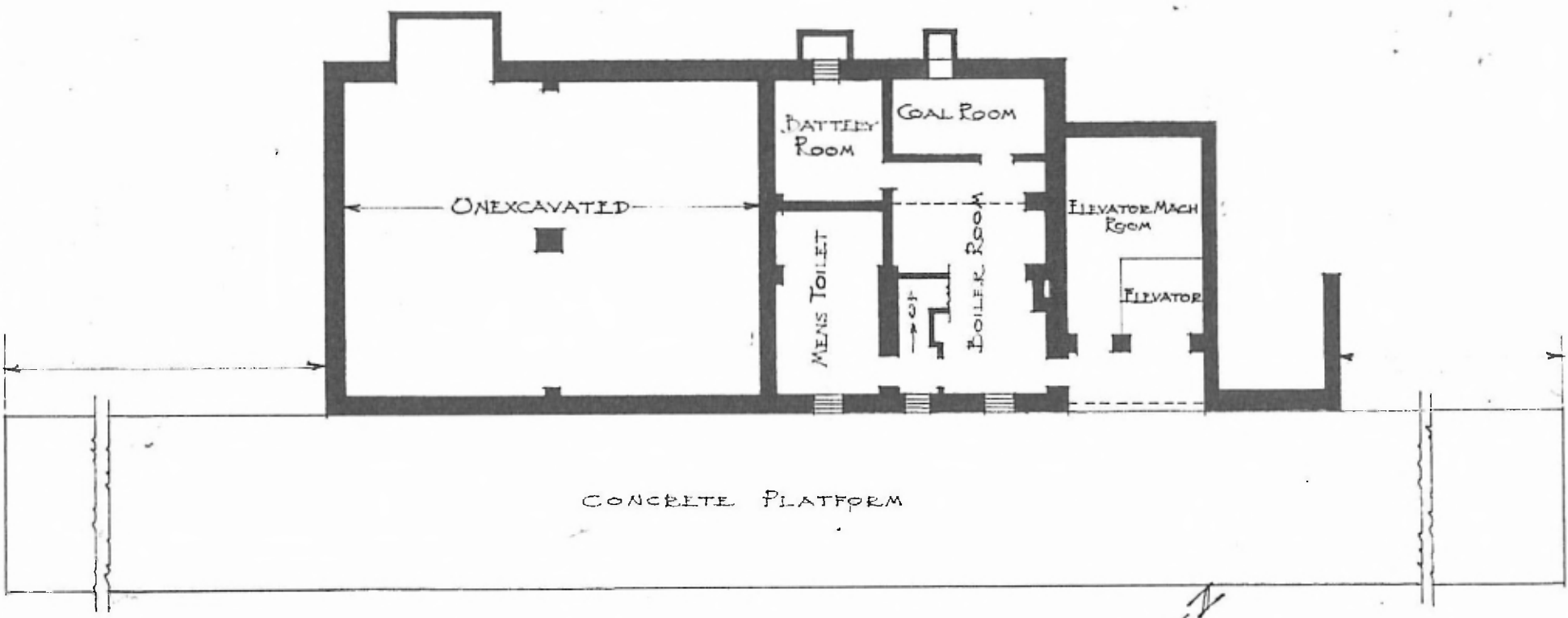
FIRST FLOOR PLAN
SCALE = 1/16" = 1'-0"



PASSENGER STATION
TOWER GROVE (ST. LOUIS, MO)

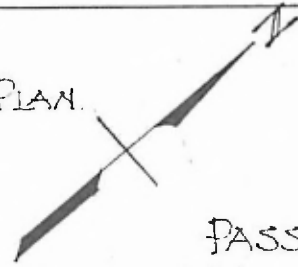
EASTERN DIV.
ROLLING SUB
STA. No. 3

1



CONCRETE PLATFORM

FOUNDATION & BASEMENT PLAN.
SCALE: $\frac{1}{16}'' = 1'-0''$



PASSENGER STATION
TOWER GROVE (ST. LOUIS, MO)