

18

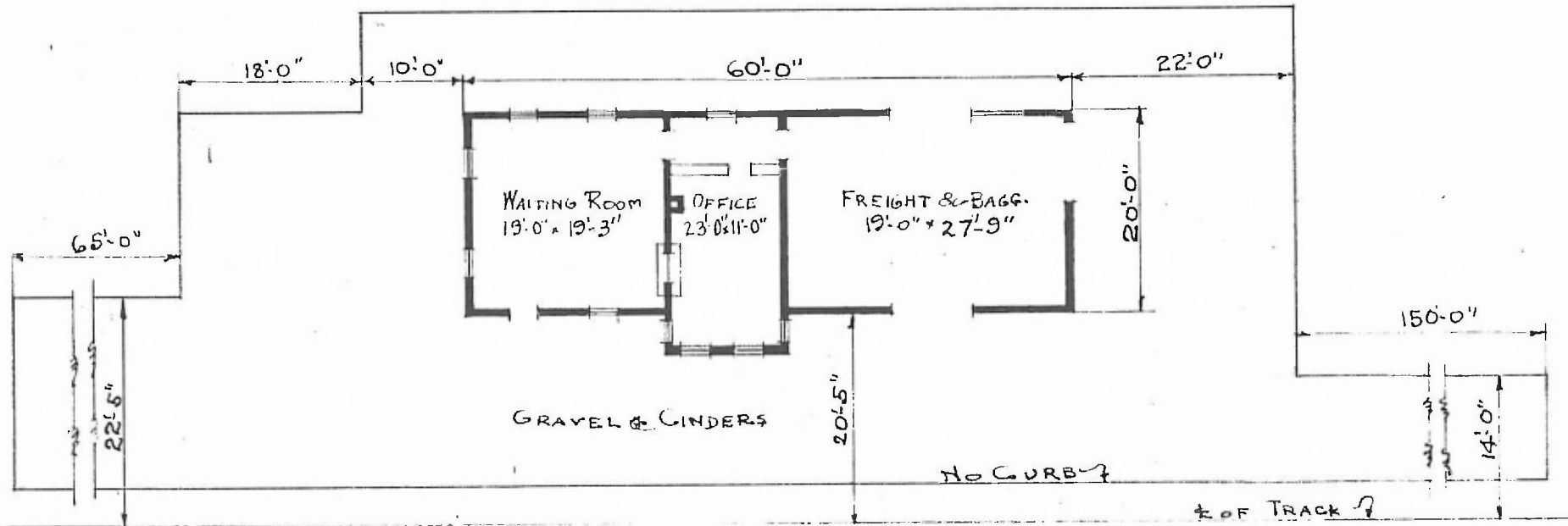
ERECTED  
 TYPE  
 FOUNDATION  
 WALLS  
 ROOF { TYPE  
 PITCH  
 HEATING

FRAME  
 PILE HEADS  
 2-6  
 GABLE-SHINGLES  
 $\frac{1}{2}$   
 STOVES

FLOOR  
 FINISH { INSIDE  
 OUTSIDE  
 CEILING HEIGHT  
 LIGHTING  
 SANITARY FACILITIES

RIVER DIV.  
 ST. LOUIS SUB  
 STA. No. T103.

$\frac{3}{4}$ " x  $\frac{3}{4}$ " Y.P.  
 $\frac{3}{4}$ " x  $\frac{3}{4}$ " BEEDED  
 BOARDS & BATT. - 1x6 DROP SIDING  
 12'-0"  
 OIL LAMPS  
 OUTSIDE TOILETS



FLOOR PLAN  
 SCALE:  $\frac{1}{16}$ " = 1'-0"

COMBINATION STATION  
 WITTENBERG, MO.

JULY 26, 1917