

# Manning, Maxwell & Moore, Inc.

MANUFACTURERS AND DISTRIBUTORS OF

Ashcroft Gauges	Putnam Machine Tools
Consolidated Safety Valves	Shaw Cranes
Hancock Inspirators and Valves	Castings
Hayden & Derby Injectors	Mill Supplies

Main Office: 100 East 42nd Street, New York, N. Y.



BRANCH OFFICES

Atlanta	Cleveland	San Francisco
Boston	Detroit	Seattle
Buffalo	Philadelphia	St. Louis
Chicago	Pittsburgh	Syracuse

## THE OHIO INJECTOR COMPANY

1437 Monadnock Block

CHICAGO, ILLINOIS

Manufacturers of

OHIO LIFTING INJECTORS  
 CHICAGO NON-LIFTING INJECTORS  
 CHICAGO AUTOMATIC FLANGE OILERS, CHICAGO  
 LUBRICATORS, OHIO LOW WATER ALARMS, CHICAGO AUTOMATIC  
 DRIFTING VALVES, LOCOMOTIVE BOILER ATTACHMENTS, OHIO CAB SQUIRTS

W. H. CROFT, First Vice-President

M. S. PAINE, Secretary-Treasurer

## Magnus Company

INCORPORATED

Journal Bearings and Bronze Engine Castings

NEW YORK

CHICAGO

## BALDWIN LOCOMOTIVES FOR LONG AND CONTINUOUS SERVICE

**R**EPORTS which have come to us unsolicited show that locomotives built by these Works twenty, thirty and even forty years ago, are still in active service. When you order a Baldwin—whether it be a small contractor's locomotive, or a powerful main line engine—you may be sure of securing long and satisfactory service.

THE BALDWIN LOCOMOTIVE WORKS

PHILADELPHIA



## HAMILTON THIN MODELS

(12 size)

can be had in filled or 14K White or Green gold cases, plain or engraved,

\$46 to \$250

Women's Wrist Models,

\$46 to \$60

Strap Watches for Men  
and Women,

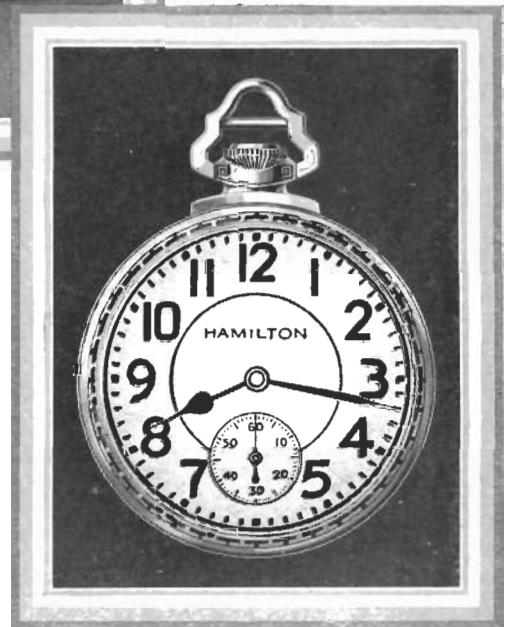
\$50 to \$85

## GIFTS

THAT WILL ALWAYS BE  
TREASURED

IN SELECTING a Hamilton Watch as a Christmas Gift you can be sure that your choice will admit of no regrets.

It is a gift that will be used and appreciated for many, many years. Its accuracy is nothing short of amazing; its beauty distinctive and enduring.



### THE GIFT FOR HIM

Nothing will please him more than this specially cased Hamilton No. 992 that is built for railroad men. Ask to see it at your jeweler's.

HAMILTON WATCH COMPANY

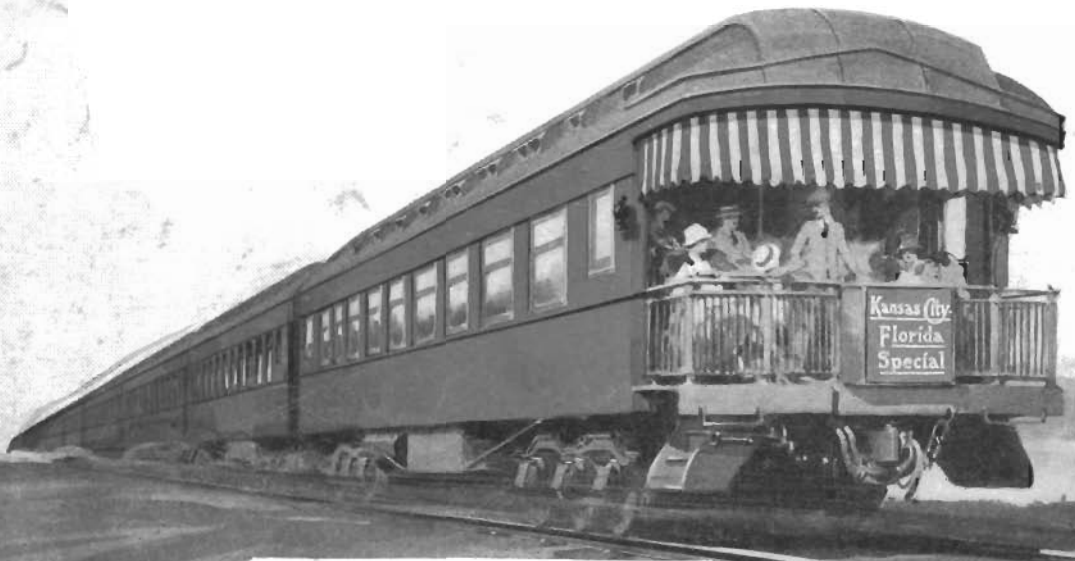
*"On the Lincoln Highway"*

LANCASTER, PENNA., U. S. A.

# Hamilton Watch

"The Railroad Timekeeper of America"

# FRISCO <sup>to</sup> FLORIDA



## Kansas City-Florida Special

—fast, all-steel, year 'round through train  
**Kansas City to Jacksonville**

with sleeping car service from St. Louis, Wichita and Oklahoma City

Lv. Kansas City .....	Frisco Lines.....	6:00 pm
Lv. Springfield .....	" " .....	11:59 pm
Ar. Memphis.....	" " .....	7:50 am
Lv. St. Louis.....	" " .....	11:25 pm
Ar. Memphis.....	" " .....	7:35 am
Lv. Memphis.....	" " .....	8:05 am
Lv. Birmingham.....	Southern Ry. System .....	3:30 pm
Ar. Jacksonville....	" " " .....	7:45 am

Through sleeping car service to Miami will be established  
 December 28th via Florida East Coast  
 Railway from Jacksonville.

Oklahoma City-Memphis  
 sleeping car leaving Okla-  
 homa City, 3:00 pm, ar-  
 riving Memphis, 7:50 am  
 on the Kansas City-Flori-  
 da Special, provides  
 through service, Okla-  
 homa City to Florida,  
 with only a car-to-car  
 change.

Once-a-week through  
 sleeping car, Wichita to  
 Jacksonville, via Spring-  
 field and the Kansas City-  
 Florida Special will leave  
 Wichita every Saturday  
 at 2:30 pm during De-  
 cember and January and  
 the first two weeks of  
 February.

Observation Sleeping Car Kansas City to Jacksonville

**DINING CAR SERVICE ALL THE WAY — FRED HARVEY MEALS ON THE FRISCO**