

Con. P. Curran Printing Co.

PRINTERS
DESIGNERS : ENGRAVERS
LITHOGRAPHERS
BLANK BOOK MAKERS

PHONES

Bell, Main 5191
Kinloch, Central 991

EIGHTH AND WALNUT STREETS
ST. LOUIS, MO.

The Hewitt Supply Co.

C. M. HEWITT, President

HEWITT BABBITT METALS

Standard Metallic Packing Rings

RUBBER GOODS

CHICAGO GRAIN DOORS

303 Railway Exchange - Chicago

Storrs' "Never Break"



MICA Headlight
Chimneys

To the Road: *An Economy*
To the Engineman: *A Convenience*

Storrs Mica Co. ^{R. R.} Dept. Owego, N. Y.

ST. LOUIS
UNION
TRUST
COMPANY

St. Louis, Mo.

CAPITAL AND SURPLUS
\$10,000,000.00

Solicits accounts on which
interest will be allowed.
Executes Trusts of every
description.

ROBERT W. HUNT & CO., Engineers

CHICAGO NEW YORK PITTSBURG ST. LOUIS
SAN FRANCISCO MONTREAL LONDON

INSPECTION OF RAILROAD MATERIALS AND EQUIPMENT

Mention us when writing to advertisers, it will help us both.



Frank E. Palmer Supply Co.

ST. LOUIS, MO.

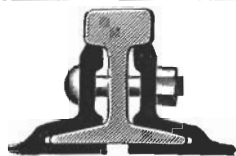
GENUINE FAESSLER EXPANDERS

PERFECT FLUE CUTTER

JOYCE-CRIDLAND CO. LIFTING JACKS

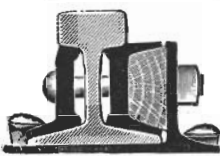
OF EVERY DESCRIPTION

CATALOGUE ON REQUEST



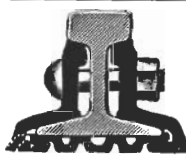
CONTINUOUS JOINT

Over
50,000
miles
in use



WEBER JOINT

Rolled
from
Best Quality
Steel



WOLHAUPTER JOINT

THE RAIL JOINT COMPANY

GENERAL OFFICES:

Cameron Bldg., 185 Madison Av., New York City

Makers of Base Supported Rail Joints for Standard and Special Rail Sections, also Girders, Step or Compromise, Frog and Switch, and Insulating Rail Joints, protected by patents.

Catalogs at Agencies

Baltimore, Md.	Pittsburg, Pa.
Boston, Mass.	Portland, Oregon
Chicago, Ill.	San Francisco, Calif.
Denver, Col.	St. Louis, Mo.
New York, N. Y.	Troy, N. Y.

London, E. C., Eng. Montreal, Can.

HIGHEST AWARDS—Paris, 1900; Buffalo, 1901; St. Louis, 1904.

KIRBY LUMBER CO.

Houston, Texas

MANUFACTURERS

Long Leaf Yellow Pine Lumber

ADDRESS CORRESPONDENCE TO

RAY WIESS, General Sales Agent

Livingston Coal

Is mined at Livingston, Illinois, on the
FRISCO, C. & E. I.

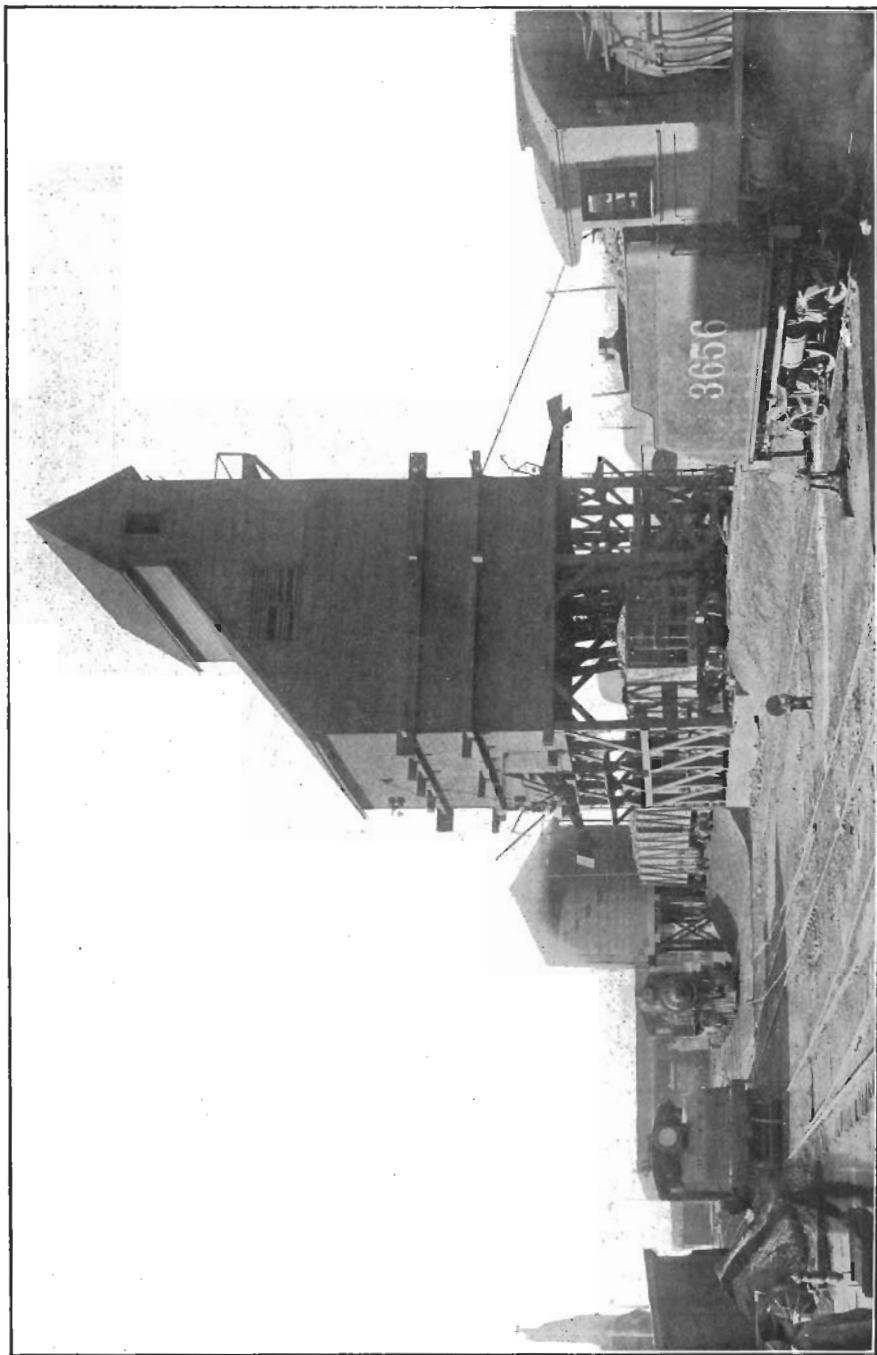
Largest commercial mine in Illinois, having loaded 102 cars in 8 hours.

Insist on getting **Livingston** coal from your dealer so the Frisco, C. & E. I., will get the revenue.

RUTLEDGE & TAYLOR COAL COMPANY

ST. LOUIS, MO.

CHICAGO, ILL.



SOUTH SPRINGFIELD COALING PLANT.

(See page 11.)



Vol. V, No. 1

SAINT LOUIS, MO.

January, 1911

FROM ONE OF US—
TO ALL OF US—GREETINGS

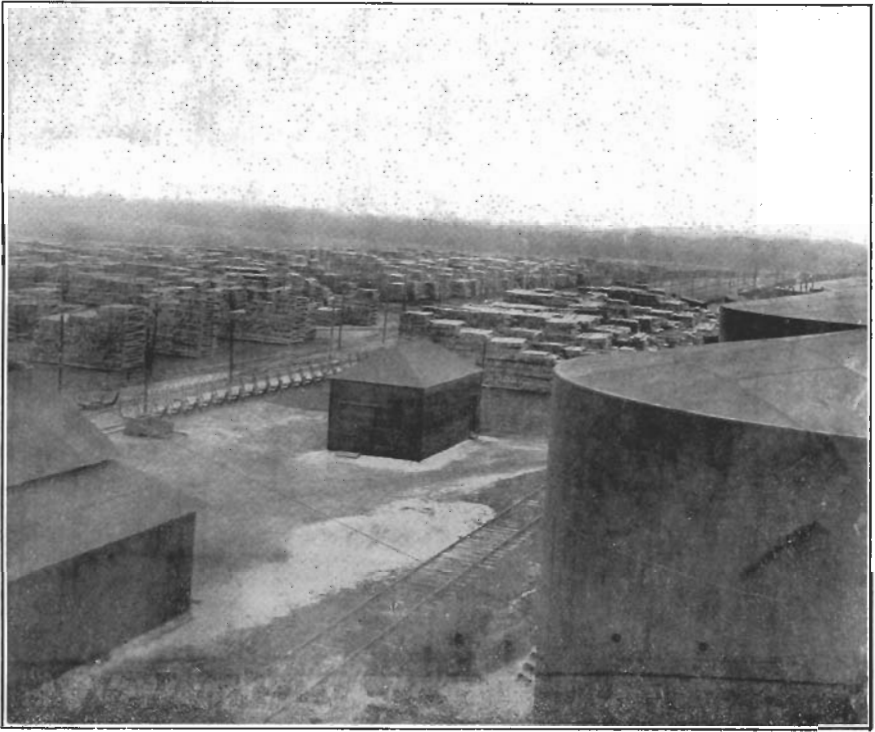
AS ONE OF THE FRISCO EMPLOYEES, I WISH ALL OF THE OTHERS, MY FELLOW LABORERS, A HAPPY AND A PROSPEROUS NEW YEAR.

YOU AND I WILL BE RESPONSIBLE TO A LARGE EXTENT FOR THE PROSPERITY OF OUR RAILROAD, WHICH, BY THE WAY, TURNS DIRECTLY OVER TO US EVERY MONTH ABOUT FORTY-FIVE CENTS OUT OF EVERY DOLLAR TAKEN IN.

IF THE FRISCO IS PROSPEROUS, WE WILL BE; IF WE ARE NOT INTERESTED AND ENERGETIC AND RESOURCEFUL, THE FRISCO CANNOT BE PROSPEROUS. THE OUTCOME IS LARGELY IN OUR HANDS, AND WE SHOULD AT THIS PARTICULAR TIME MAKE THE MOST OF OUR OPPORTUNITY.

CORDIALLY YOURS,

B. Pinchew



Tie Storage Yard at Hugo Creosoting Plant.

The accompanying photograph was taken from the top of one of the creosote storage tanks, and gives an idea of the method and extent of piling ties in the yard for seasoning.

The total storage capacity of the yard is approximately 400,000 ties, and the yard was very nearly filled with ties at the time this photograph was taken.

The ties are piled in what are called "1-10 piles." By examining the photograph, this method will be seen to afford a complete covering on top, which will tend to keep out water from the pile, and it also leaves an air space between each tier of ties, so that they will season rapidly.

The standard gauge tracks are placed 115 feet apart, with a narrow gauge

track in the center between, and the tie piles are placed solid between the narrow gauge and standard gauge tracks, except that there is a 4-foot alley between each row of ties. The piles are generally 28 ties high, and on this basis there would be 17,000 ties piled between standard gauge tracks for each 100 feet, measured along the tracks.

The pine ties, which are principally treated at Hugo, require much less time for seasoning than is required for the red oak ties. On this account, while the actual storage capacity of the Hugo yard is only about 400,000 ties, it is possible to store sufficient ties to season a very much larger number of ties.