

Frisco-Man's Directory.

Banks.

Bankers Trust Co., New York, N. Y.

Belts.

Byrnes Belting Co., St. Louis, Mo.

Cars.

Standard Steel Car Co., Pittsburg, Pa.

Chemicals.

Ball Chemical Co., Pittsburg, Pa.
Dearborn Drug & Chemical Works,
Chicago, Ill.

Electric.

Oliver Electric Co., St. Louis, Mo

Enamels and Varnishes.

American Transparol Co., New York,
N. Y.

Engineers.

R. W. Hunt & Co., Chicago, Ill.

Engraving.

Sanders Engraving Co., St. Louis, Mo.

Express.

United States Express Co., St. Louis,
Mo.

Headlights.

Pyle National Electric Headlight Co.,
Chicago, Ill.

Heating and Lighting.

Safety Car Heating & Lighting Co.,
New York, N. Y.

Hotels.

Blossom House, Kansas City, Mo.

Insurance.

Continental Casualty Co., Chicago, Ill.
Marsh & McLennon, Chicago, Ill.
Standard Accident Ins. Co., Detroit,
Mich.
Travelers Insurance Co., Hartford,
Conn.

Jewelry.

Mermod, Jaccard & King, St. Louis,
Mo.

Locomotives.

Baldwin Locomotive Works, Phila-
delphia, Pa.

Lumber.

Industrial Lumber Co., Elizabeth, La.
Kirby Lumber Co., Houston, Tex.
Western Tie & Timber Co., St. Louis,
Mo.

Mail Order.

Montgomery Ward & Co., Chicago, Ill.

Oils.

Galena Signal Oil Co., Franklin, Pa.
Standard Oil Co., New York, N. Y.
The Texas Co., New York, N. Y.

Paints and Varnishes.

Flint Varnish Works, Flint, Mich.
St. Louis Surface & Paint Co., St.
Louis, Mo
The Clapp Fire Resisting Paint Co.,
Bridgeport, Conn.

Printing.

C. P. Curran Printing Co., St. Louis,
Mo.
Woodward & Tiernan Printing Co.,
St. Louis, Mo.

Publishers.

The Mediator, Cleveland, Ohio.

Railway Supplies.

Adreon & Co., St. Louis, Mo.
Anderson Mfg. Co., Coffeyville, Kan.
Bettendorf Axle Co., Davenport, Iowa.
Buffalo Brake Beam Co., New York,
N. Y.
B. W. Mudge & Co., Chicago, Ill.
Chicago Pneumatic Tool Co, Chicago,
Ill.
Cochran Pipe Wrench Mfg. Co., Chi-
cago, Ill.
Crane & Co., Chicago, Ill.
F. E. Palmer Supply Co., St. Louis,
Mo.
Holzbacher Forge & Rolling Mills
Co., St. Louis, Mo.
Hewitt Mfg. Co., Chicago, Ill.
Hewitt Supply Co., Chicago, Ill.
National Boiler Washing Co., Chi-
cago, Ill.
Niles-Bement-Pond Co., New York,
N. Y.
Rail Joint Co., New York, N. Y.
Spencer Otis Co., Chicago, Ill.
Standard Forgings Co., Chicago, Ill.
Standard Railway Equipment Co.,
Pittsburg, Pa.
The Hayward Co, New York, N. Y.
W. C. Squires, Chicago, Ill.

Rope.

St. Louis Cordage Mills, St. Louis,
Mo.

Schools.

International Correspondence School,
Scranton, Pa.

Switches.

Elliot Frog & Switch Co., East St.
Louis, Ill.

Kilby Frog & Switch Co., Birming-
ham, Ala.

St. Louis Frog & Switch Co., St.
Louis, Mo.

Typewriters.

L. C. Smith & Bros. Typewriter Co.,
Syracuse, N. Y.

Uniforms.

James H. Hirsch & Co., Chicago, Ill.

Upholstering.

Pantasote Leather Co., New York,
N. Y.

Valves.

Ashton Valve Co., Boston, Mass.

Watches.

Hamilton Watch Co., Lancaster, Pa.

Illinois Watch Co., Springfield, Ill.

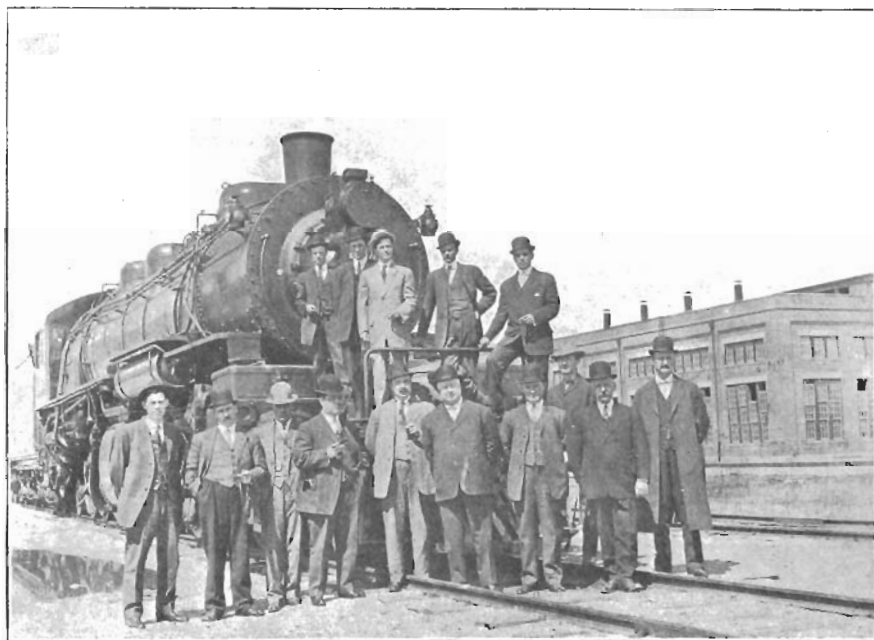
South Bend Watch Co., South Bend,
Ind.

Waltham Watch Co., Waltham, Mass.

W. C. Ball Watch Co., Cleveland, Ohio.

Wire.

Kerite Insulated Wire Co., New York,
N. Y.



Mallet Engine No. 2002, taken in front of the New Shops, Springfield, Mo.

*Left to right, the Frisco men shown, are—Top row: J. A. Satorie, Homer Black,
J. A. Henshaw, John Allan, E. A. Shull.*

*Bottom row, left to right: Nelson Benson, L. E. Richardson, R. Wommack, Guy Eskridge,
John Swift, J. E. Henshaw, F. A. Beyer, J. C. Breckenfelt, J. T. Walsh and
David Craig.*

The Hewitt Supply Co.

C. M. HEWITT, President

HEWITT BABBITT METALS

Standard Metallic Packing Rings

RUBBER GOODS

CHICAGO GRAIN DOORS

303 Railway Exchange - Chicago

The Texas Company

TEXACO FUEL OIL

Conforming to Government Specifications
HIGH IN FUEL VALUE
Efficient — Economical

Texaco Railroad Lubricants

Cut down the wear and tear on rolling stock

ILLUMINATING OILS SIGNAL OILS

THE TEXAS COMPANY

MANUFACTURERS OF ALL KINDS OF PETROLEUM PRODUCTS

When Visiting Kansas City

STOP AT

BLOSSOM HOUSE



OPPOSITE UNION DEPOT
EUROPEAN PLAN



MARSH & McLENNAN

INSURANCE

IN ALL ITS BRANCHES

159 La Salle Street
CHICAGO

54 William Street
NEW YORK

123 Bishopsgate Street
LONDON

Mention us when writing to advertisers, it will help us both.

TO

Clerks and Minor Officials

GENTLEMEN:

Holding your job is difficult. Qualifying for advancement is even more difficult. This is a day of tremendous competition among the ranks of railroad employes, especially among the clerks and minor officials.

Many make the mistake of assuming that a given amount of energy expended upon any given task will hold a man his job. This is far from true. There is not a job in the world that does not grow.

Every position in a growing institution, such as a railroad, is a bigger and more responsible position today than it was yesterday.

To keep your job, and get in line for advancement, you must keep growing with it. A growing institution is no place for a stand-patter. Sooner or later he gets jarred out of place automatically. He never advances to the rung higher up on the ladder.

To keep growing, you should keep expanding and broadening your mental vision. You must keep enlarging your mental grasp of the big industrial subjects of the day. You must see and understand the significance of the great movements in the industrial world.

THE MEDIATOR, the little gray magazine of industrial economy, will help you see and understand these things. Its corps of trained writers on industrial subjects, especially railroad subjects, present to their readers every month the gist and marrow of the big movements, problems, events, and innovations that arise in the railroad world. It boils these big subjects down into snappy, intelligible, crisply-written articles.

THE MEDIATOR needs your co-operation. You need its help, its broadening influence, its assistance to the man who wants to do a better and more intelligent day's work.

Send post card for free sample copy. Subscription price, one dollar per year.

THE MEDIATOR

A Magazine of Industrial Economy

ROCKEFELLER BUILDING

CLEVELAND, OHIO

The Cleanola Co.



**The Perfect Car and Locomotive
Cleaner and Varnish Preservative**

Chicago Office, 514 W. Van Buren Street
Fulton Building, :: :: Pittsburgh, Pa.

The Ball Chemical Co.

OXOLIN
REGISTERED

THE IDEAL PAINT OIL

BALL'S
VARNISH REMOVER

B. C.
SPIRITS

Fulton Building, :: :: Pittsburgh, Pa.
Chicago Office, 514 W. Van Buren Street

ADREON MANUFACTURING CO.

Campbell Graphite Lubricator	Turnbuckles
Security Back-up Valve	Stop Wedges
Security Rail Brace	Brake Jaws
American Gravity Coupling	Knuckle Pins
Clarke Tension Set Tie Plate	Bolts and Nuts
Brake Shoes and Keys	Spikes

BELL TELEPHONE, Main 3226-3227

SECURITY BUILDING - ST. LOUIS, MO.

CRANE LOCOMOTIVE BLOW-OFF VALVE



Malleable Iron
Body; Crane
Hard Metal
Trimings.

Valve opening 2½ inches. Two-inch
Boiler connection. Wearing parts
renewable. Seats self-cleaning.
Closes automatically with the pressure;
impossible to stick open.

SAMPLE VALVE FOR TRIAL
WITHOUT CHARGE.

CRANE CO.
CHICAGO

ESTABLISHED 1855

KILBY FROG AND SWITCH CO.

BIRMINGHAM, ALABAMA



MANUFACTURERS OF

**RAILROAD CROSSINGS,
FROGS, SWITCHES,
SWITCH STANDS,
Etc.**

HEWITT MANUFACTURING CO.

C. M. HEWITT, President

303 Railway Exchange

CHICAGO

Journal Bearings
and
Brass Engine Castings

OFFICE AND WORKS:

4153 Clayton Ave.

ST. LOUIS, MO.