

Otis Christopher is appointed car clerk, succeeding J. T. Walker. Mr. Christopher is from Hugo, Okla.

### Sapulpa.

B. and B. Foreman O. V. Smith and wife are receiving congratulations over the arrival of a little son, born March 1. Of course, the cigars were passed around.

### A Frisco Inventor.

The convertible stock and box car, patented, was invented by Fireman A. Mosley of St. Louis, and J. J. Metz, salesman for a local stove concern.

The inventors claim that the car can be used for the loading of any commodity, and that the interior of the car, when properly closed, is safe from all weather conditions, and can be fastened to prevent pilfering, serving the same purpose as box cars now in use.

They further claim that a great many of the stock cars now in use can be changed into convertible cars at a very small expense.

In loading watermelons, potatoes,



coal, etc., they claim, it is not required to nail strips between slats to protect shipment which is another expense saved.

Further, that by dropping the lower section of slides the shipment is protected from pilfering and damage, and also gets the proper amount of ventilation. According to the inventors, it requires only about ten minutes' time to change the slides to load in any way desired.

The car was on exhibition at the International Exhibition of Inventions at St. Louis the week of September 11, 1911, on which occasion Fireman A. K. Page was demonstrator.

The photograph above shows the car open.

### F. R. C. at Springfield.

At the regular monthly meeting of the Frisco Railroad Club of Springfield, Mo., February 19, the visiting members of the Frisco Office Efficiency Association, which organization was in session at Springfield, were the guests of the club.

A supper was served at 6:30 P. M., followed by short speeches made by Judge E. P. Mann, George A. Hancock, general superintendent motive power; and J. H. Doggrell, superintendent freight loss and damage claims. After the supper members of the club together with their guests enjoyed a theatre party.

At the business session of the club, D. M. Todd was elected secretary to serve out the unexpired term of W. T. Bissell, resigned.

### William Fagan.

William Fagan, one of the most widely known Frisco conductors, died at his home, 713 Gladstone Boulevard, Kansas City, Mo., February 26.

Mr. Fagan was fifty-four years old and had served as conductor on runs between Springfield and Kansas City and Springfield and Memphis, for the last twenty-five years.

Mr. Fagan is a member of the Order of Railway Conductors. He is survived by his wife, two sons, J. W. and Joseph A. Fagan, and a daughter, Mrs. O. C. Loose of London England.

# PYLE-NATIONAL ELECTRIC HEADLIGHTS

ARE BEING USED ON OVER 16,000 LOCOMOTIVES  
ALL OVER THE WORLD



## CHICAGO PNEUMATIC TOOL COMPANY



MANUFACTURERS OF

BOYER HAMMERS, LITTLE GIANT AIR DRILLS,  
DUNTLEY ELECTRIC DRILLS, ROCKFORD RAILWAY MOTOR CARS,  
CHICAGO PNEUMATIC AIR COMPRESSORS

CHICAGO

ST. LOUIS

NEW YORK

1822-24 LOCUST ST.

### Over the Arkansas.

The Frisco's bridge, which crosses the Arkansas River at Van Buren, Ark., is shown in the accompanying reproduction.



The picture was sent to THE FRISCO-MAN by Roy Snyder, employed in Superintendent Koch's office at Fort Smith, Ark.



### Safe "Travel Money"

Not actual money, of course, but *accepted like money* in every part of the civilized world. You avoid risk of loss when you travel with these cheques. They are useless without your signature, which identifies you to the people you have to deal with. Hotels, railways, steamship lines and the best shops in every country know they are as good as actual money. Each cheque is engraved with its exact value in foreign currency.

### "A. B. A." Cheques

Get them at your bank. If your bank is not yet supplied with them, write for booklet and information as to where they can be obtained in your vicinity.

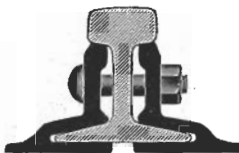
BANKERS TRUST COMPANY, New York City

**CONTINENTAL CASUALTY CO.**  
**COMPLETE COMPENSATION**  
**CHICAGO**  
**H. G. B. Alexander**  
**PRESIDENT**

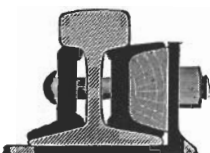
Insures more Railroad Men  
 Pays More Railroad Men  
 Employs more Ex-Railroad Men  
**THAN ANY OTHER COMPANY**

1208 Michigan  
 Avenue  
**CHICAGO**

Before I'm hurt tell me how little Income Insurance costs.	Name .....
	Address .....
	Age ..... Occupation .....



Over  
 50,000  
 miles  
 in use



Rolled  
 from  
 Best  
 Quality  
 Steel



**CONTINUOUS JOINT**  
**THE RAIL JOINT COMPANY**

**WEBER JOINT**

**WOLHAUPTER JOINT**

GENERAL OFFICES:

185 MADISON AV., NEW YORK CITY

Makers of Base Supported Rail Joints for Standard and  
 Special Rail Sections, also Girder, Step or Comprom-  
 ise, Frog and Switch, and Insulated Rail  
 Joints, protected by patents.

Catalog at Agencies  
 Boston, Mass. India Bldg.  
 Chicago, Ill.  
 Railway Exchange Bldg.  
 Denver, Colo. Equitable Bldg.  
 Portland, Ore. Wilcox Bldg.  
 Pittsburg, Pa. Oliver Bldg.  
 St. Louis, Mo. Commonwealth Trust Bldg.  
 Troy, N. Y. Burden Avenue  
 Montreal, Can. Board of Trade Bldg.  
 London, E. C., Eng. 36 New Broad St.

Highest Awards—Paris, 1900; Buffalo, 1901; St. Louis, 1904.

**Berthold & Jennings Lumber Co.**  
**MANUFACTURERS AND WHOLESALE DEALERS**  
 Yellow Pine and Oak Railroad Material of all Description  
**WRIGHT BUILDING** **ST. LOUIS, MO.**

Mention us when writing to advertisers, it will help us both.

# Con. P. Curran Printing Co.

*Printers, Designers,  
Engravers, Lithographers,  
Blank Book Makers*

**PHONES**

Bell, Main 5191  
Klafoch, Central 991

EIGHTH AND WALNUT STREETS  
ST. LOUIS, MO.

## THE DEARBORN PROCESS

of treating locomotive boiler waters requires no outlay of capital for installation of equipment; the manner of applying the treatment is simple; the cost per thousand gallons of water is less than by any other method; and the desired results are assured if the treatment is correctly used.

Gallon samples of the waters required for analysis.

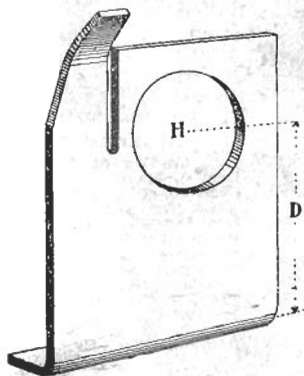
### DEARBORN CHEMICAL COMPANY

MCCORMICK BLDG. CHICAGO

## United Supply & Manufacturing Co.

RAILWAY EXCHANGE  
CHICAGO

Wool and Cotton Wiping and Packing  
Waste, Nuts, Bolts, Rivets, Spikes,  
Axles, American Rail Loader



SHOWING DETAILS FOR MEASUREMENT

### BARTLEY POSITIVE FASTENERS

Try them on repair work and specify them on new cars and locomotives.

American Nut & Bolt Fastener Co.  
PITTSBURGH, PENNSYLVANIA

## SPENCER-OTIS COMPANY

CHICAGO :: ILL.

### Car and Locomotive Axles

### STEEL FORGINGS

300 to 30,000 pounds each. Rough  
Machined or Finished Complete.

Crusher and Hoist Shafts  
A SPECIALTY

### The Standard Forgings Company

SALES OFFICE:

Railway Exchange Building, Chicago.  
Works: Indiana Harbor, Ind.

Mention us when writing to advertisers, it will help us both.