

Newton R. Wilson, President
 R. M. Hallowell, V-Pres't & Gen'l Mgr.
 E. A. Wilson, 2d V-Pres't.

E. T. Brough, Secretary
 L. R. Millard, Treas.
 Jos. Muth, Auditor

INDUSTRIAL LUMBER CO.
CALCASIEU LONG LEAF YELLOW PINE LUMBER
 RAILROAD AND MINING TIMBERS A SPECIALTY

**ELIZABETH, CALCASIEU AND
 OAKDALE MILLS IN LOUISIANA**

Branch Offices:
 Chicago, - - 1520-23 Steger Building
 Wichita, Kan. Temple, Tex.
 Monterey, Mex.

Annual Capacity - - - 200 Million Feet
 Paid-Up Capital and Surplus, \$4,300,000

General Offices:
ELIZABETH, - - LOUISIANA

ROBERT W. HUNT & CO., Engineers

CHICAGO NEW YORK PITTSBURG ST. LOUIS
 SAN FRANCISCO MONTREAL LONDON
 TORONTO MEXICO CITY SEATTLE

INSPECTION OF RAILROAD MATERIALS AND EQUIPMENT

**No Railroad Man
 Can Afford To Be Without**

**ACCIDENT
 INSURANCE**

Our Accident Policies afford the
 greatest benefits at the lowest
 cost, most liberal adjustment, and
 prompt payment.

We paid in 1911 over \$1,713,000 in
 accident benefits.

SEE THE AGENT

**The Travelers Insurance Company
 HARTFORD, CONN.**

The Greatest Accident Company in the
 World.
 Has paid over 562,000 accident claims.

**SPENCER-OTIS
 COMPANY**

CHICAGO, ILLINOIS

**United Supply &
 Manufacturing Co.**

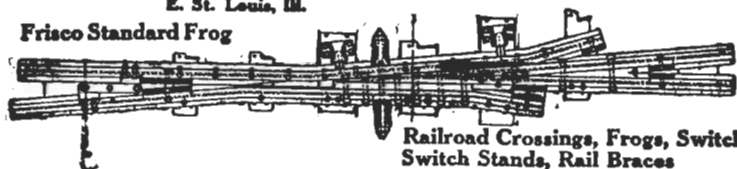
**RAILWAY EXCHANGE
 CHICAGO**

Wool and Cotton Wiping and Pack-
 ing Waste, Nuts, Bolts, Rivets,
 Spikes, Axles, American
 Rail Loader

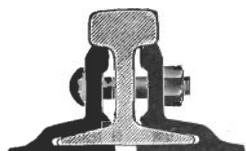
**PYLE-NATIONAL
ELECTRIC HEADLIGHTS
ARE BEING USED ON OVER 26,000 LOCOMOTIVES
ALL OVER THE WORLD**

Elliot Frog & Switch Co.
E. St. Louis, Ill.

Frisco Standard Frog



**Railroad Crossings, Frogs, Switches,
Switch Stands, Rail Braces**



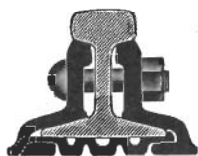
CONTINUOUS JOINT

Over
50,000
Miles
in Use



WEBER JOINT

Rolled
from
Best
Quality
Steel



WOLHAUPTER JOINT

Catalog at Agencies

Boston, Mass. India Bldg.
Chicago, Ill.

Railway Exchange Bldg.
Denver, Colo. Equitable Bldg.
Portland, Ore. Wilcox Bldg.
Pittsburg, Pa. Oliver Bldg.
St. Louis, Mo.

Commonwealth Trust Bldg.
Troy, N. Y. Burden Avenue
Montreal, Can.

Board of Trade Bldg.
London, E. C., Eng.
36 New Broad St.

THE RAIL JOINT COMPANY

GENERAL OFFICES:

185 MADISON AVE., NEW YORK CITY

Makers of Base Supported Rail Joints for Standard and
Special Rail Sections, also Girder, Step or Comprom-
ise, Frog and Switch, and Insulated Rail
Joints, protected by patents.

Highest Awards—Paris, 1900; Buffalo, 1901; St. Louis, 1904

**KIRBY
LUMBER CO.**
Houston, Tex.

MANUFACTURERS
Long Leaf Yellow Pine Lumber

Address Correspondence to
J. W. CHANDLER, General Sales Agt.

Mention us when writing to advertisers, it will help us both.



Wanted—Traffic Ideas

The Frisco is always on the alert for suggestions.

You can show us how to get more business.

How to get better results with less expenditure of time and energy.

How to effect Real Economies.

The Traffic Department is anxious to be shown.

Send in your ideas and help "boost."

W. B. BIDDLE,
Receiver and Chief Traffic Officer