

**Cut Over Pine Lands For Sale  
to Actual Settlers**  
Industrial Lumber Co., Elizabeth, La.

**ROBERT W. HUNT & CO., Engineers**

CHICAGO      NEW YORK      PITTSBURG      ST. LOUIS  
SAN FRANCISCO      MONTREAL      LONDON  
TORONTO      MEXICO CITY      SEATTLE

INSPECTION OF RAILROAD MATERIALS AND EQUIPMENT

**Adreon Manufacturing Co.**

Campbell Graphite Lubricator      Turnbuckles  
Security Back-up Valve      Stop Wedges  
Security Rail Brace      Brake Jaws  
American Gravity Coupling      Knuckle Pins  
Clarke Tension Set Tie Plate      Bolts and Nuts  
Brake Shoes and Keys      Spikes

BELL TELEPHONE, Main 3226-3227

Security Bldg., ST. LOUIS, MO.

**Hewitt Manufacturing Co.**

C. M. HEWITT, President

303 Railway Exchange      CHICAGO

**Journal Bearings**

AND

**BRASS ENGINE CASTINGS**

OFFICE AND WORKS

4153 Clayton Ave.,      ST. LOUIS, MO.

**DEARBORN TREATMENT**

Prevents Foaming in Alkali Water Districts, enabling engines to make greater mileage between boiler washings, and haul greater tonnage.

DEARBORN ANTI FOAMING PREPARATIONS should be carried on the engines and applied each time water is taken, dissolving the required quantity in hot water and placing in the engine tank before filling.

DEARBORN CHEMICAL COMPANY,

McCormick Building, CHICAGO

❖ **KODAKS and SUPPLIES** ❖

ENLARGEMENTS, LANTERN SLIDES, SAFETY  
GOGGLES, CONDUCTORS, EYE GLASSES, Etc.

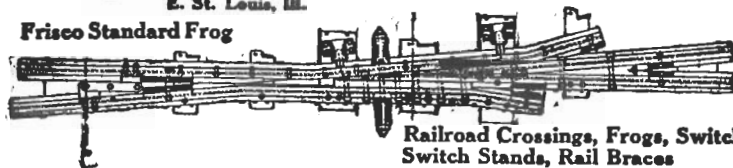
**ERKER'S—608 Olive and 511 N. Grand—ST. LOUIS**

Mention us when writing to advertisers, it will help us both.

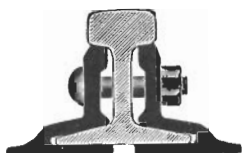
**PYLE-NATIONAL  
ELECTRIC HEADLIGHTS  
ARE BEING USED ON OVER 26,000 LOCOMOTIVES  
ALL OVER THE WORLD**

**Elliot Frog & Switch Co.**  
E. St. Louis, Ill.

**Frisco Standard Frog**

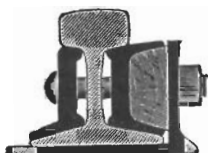


**Railroad Crossings, Frogs, Switches,  
Switch Stands, Rail Braces**



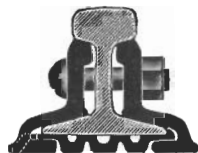
**CONTINUOUS JOINT**

Over  
50,000  
Miles  
in Use



**WEBER JOINT**

Rolled  
from  
Best  
Quality  
Steel



**WOLHAUPTER JOINT**

Catalog at Agencies

Boston, Mass. India Bldg.  
Chicago, Ill.      Commonwealth Trust Bldg.  
Railway Exchange Bldg.  
Denver, Colo. Equitable Bldg.  
Portland, Ore. Wilcox Bldg.  
Pittsburg, Pa. Oliver Bldg.  
St. Louis, Mo.      Board of Trade Bldg.  
Troy, N. Y. Burden Avenue  
Montreal, Can.      London, E. C., Eng.  
36 New Broad St.

**THE RAIL JOINT COMPANY**

GENERAL OFFICES:

185 MADISON AVE., NEW YORK CITY

Makers of Base Supported Rail Joints for Standard and Special Rail Sections, also Girder, Step or Compromise, Frog and Switch, and Insulated Rail Joints, protected by patents.

Highest Awards—Paris, 1900; Buffalo, 1901; St. Louis, 1904

**KIRBY  
LUMBER CO.**  
Houston, Tex.

MANUFACTURERS  
**Long Leaf Yellow Pine Lumber**  
Address Correspondence to  
**J. W. CHANDLER, General Sales Agt.**

Mention us when writing to advertisers, it will help us both.

**T**HE hell to be endured hereafter, of which theology tells, is no worse than the hell which we make for ourselves in this world by habitually fashioning our characteristics in the wrong way. We are spinning our own fates, good or ill, and never to be undone. Every smallest stroke of virtue or vice leaves its never so little scar. The drunken Rip Van Winkle, in Jefferson's play, excuses himself for every fresh dereliction by saying, "I won't count this time." Well, he may not count it, but it is being counted none the less. Down among his nerve-cells and fibres the molecules are counting it and storing it up to be used against him when the next temptation comes.

—*Wm. James.*