

Finally we come to the bat and we then play an offensive game, winning what points we may, never forgetting that an eager opposition is on the alert to put us out. We cannot hope to gain first base unless we are qualified for it; it generally takes some ability to even draw "ball four." Sometimes a bunt and a hard run will gain the initial sack, generally a clean hard hit, 'f we take advantage of it, will pass us farther towards the home plate. However, it is a fact that the weaker the effort towards hitting the ball, the harder a run we must make in order to gain a base. A few games are won because of the opposition's errors, but the most certain success depends upon superior playing.

As boys we may be allowed to carry water, balls and bats to the players, perhaps even become the team mascot, provided we are congenial, but we receive no part of the gate receipts.

If we play but a boy's part in life we can expect to only carry the small jobs to the man in the game, and we cannot hope to take part in or receive any benefits resulting from the game. Inspiration plus perspiration equal elevation, and opportunity will only make you ridiculous unless you are prepared for it, just the same as a not accepted chance in a ball game. Train yourself and practice with your team mates, for of yourself the game cannot be won successfully.

So when we sit and watch an exciting and closely contested ball game, just consider the analogy between it and the game of life. Note each play, consider how the player who performed it trained in preparation and anticipation; see how closely you can apply the play, and all the game to your own life. Observe how a man who takes an opportunity or a chance

is credited with it, also that the assets are placed to his credit. Team work is absolutely essential, it is that intricate and almost sacred thing, inside ball, that goes so far towards winning the game.

The Frisco Team is composed of all the employees of the system; the team is playing one of the best games in the league, a condition only made possible by the players. The team cannot win and we cannot continue to play with it unless we make a united effort to win the game. Consider the Frisco Lines as a big ball club, each employee a player, and we are out to win the game.

### *Too Much Coal*

Those interested in fuel economy are aiding in the effort to prevent the over-loading of tenders, inasmuch as this leads to a considerable waste of coal.

Engineers along the line are working with the firemen to overcome loss of this sort.

### *Clipped From Judge*

Dead language is handy to throw in when we have no live thoughts.

\* \* \*

Things done on the side are often on the wrong side.

\* \* \*

He who borrows trouble becomes its owner.

\* \* \*

Many mistake activity for efficiency.

\* \* \*

Experience, like mining stock, is often easy to buy and hard to sell.

\* \* \*

"At any rate, I can truthfully say my business is never at a standstill."

"What is your business?"

"Moving pictures."

## ALONG THE LINE

### Cherryvale

A steel gang, in charge of Foreman Andy Vermillion, started from Cherryvale April 27. They will lay steel east from Big Hill.

J. W. Fox, of the car repair force at Neodesha, Kans., made a trip to Cherryvale April 23, for the purpose of looking after some property he owns in that section.

Foreman A. Blas and wife, who have been visiting relatives in Illinois, returned home April 23.

The Ninety-fifth anniversary of the I. O. O. F. was celebrated at Cherryvale April 27.

Traveling Air Brake Inspector Mourné visited Cherryvale April 29.

### Wichita

E. E. Miller, chief clerk to General Agent S. P. Haas, attended the meeting of the Freight Agents' Association at Houston, Texas, recently.

The outlook for a bumper wheat crop in this section was never better, report trainmen on the west end. With the 500 class engines running through to Ellsworth the Frisco should have no trouble in handling the rush.

Conductor C. F. Bowers has recently purchased a new Ford automobile. Charlie has promised to take several of the boys on a fishing trip in the near future.

At a meeting of station employees in General Agent's office April 15, the Wichita Efficiency Association was organized. The following officers were elected: Roy H. Watson, president; J. P. Rowan, vice president; James R. Rigg, secretary.

### Kansas City

Our baseball club is getting in some good practice games vs. the regulars and a picked nine. The players have just been furnished with new uniforms costing approximately \$79.00, which was raised through subscription among the shop men. On the left breast is the Safety First emblem, and on the right sleeve the letters "K. C." The Sock Yard Company has been kind enough to grant the boys the use of their grounds for games.

A very attractive flower garden has just been completed near the coach yard.

The regular "Sunday School" meeting of the foremen at Kansas City which was to be held May 5, was postponed one week account Mr. Forster being called away.

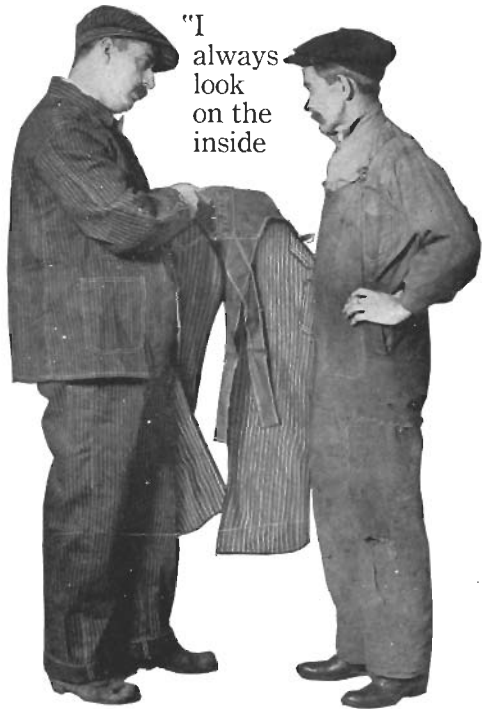
Many of the employees at this point are

# STIFEL'S

*It's the cloth in your overalls that gives the wear.*

## INDIGO CLOTH

*Standard for over seventy-five years*



to see that the cloth is stamped — "STIFEL" then I know that I am getting the best cloth in my overalls. No other cloth is "just as good." Stifel cloth has been on the market over 75 years. Be sure you see the mark on the inside before you buy if you want your garments to wear.



Cloth Manufactured by

J. L. STIFEL & SONS  
Indigo Dyers and Printers, WHEELING, W. VA.

SALES OFFICES  
NEW YORK      SAN FRANCISCO  
260-292 Church St.      Postal Telegraph Bldg.  
CHICAGO      TORONTO  
223 W. Jackson Blvd.      14 Manchester Bldg.

anxious to attend the Frisco picnic to be given by the Springfield shop men. A baseball game vs. the shop club would be a feature.

Ernest Schreiber, former painter, was drafted on the jury for one week. Well, a bachelor has a poor chance of being excused.

At one of the regular Sunday morning meetings of the foremen and master mechanic at Kansas City at which Traveling Round House Foreman Devlin attended, the suggestion was made that meetings of all the foremen on the road to be held at stated times, say once a year at least. It is believed much good could be derived from such meetings, and that the local meetings, which have proven so successful in the past, could be enlarged upon in this way.

### A Convert.

Strange things remove prejudices, and, where eloquent and convincing arguments have proven futile, some incident, perhaps trivial, will turn defeat into an overwhelming victory.

Not long since a man who was one of the bitterest opponents of the railways and who lost but few opportunities to denounce the service in all its branches, lost his wife.

In compliance with her request, he took her body east for its final resting place, and it was necessary during this trip to make several changes for connections.

Cherishing the idea that railroad men were part of a heartless machine, this man on three occasions went to the baggage car with money as his persuasive means to have the body of his wife handled with a certain amount of reverent care. In all three instances the men told him to keep his money and not to worry, that everything would be done as he desired.

This has made this man a life-time friend of railroad men and friendly to the service in which they labor.

A. H. Moll, is appointed chief dispatcher and division operator, Rolla Sub-Division, with headquarters at Newburg, Mo., succeeding J. R. Bowers, resigned, effective May 11.



## Ease of Application



Is one of many reasons that have influenced a large number of Railways to adopt BOSS LOCK NUTS as standard.

BOSS NUTS may be applied more easily and more rapidly than any other lock nut—*the saving in cost of application as compared with competing devices being in many instances sufficient to cover cost of all BOSS NUTS used.*

## Boss Nut Company

Grand Central Terminal,  
NEW YORK

Railway Exchange,  
CHICAGO

# Cut Over Pine Lands For Sale to Actual Settlers

Industrial Lumber Co., Elizabeth, La.

## ROBERT W. HUNT & CO., Engineers

CHICAGO    NEW YORK    PITTSBURG    ST. LOUIS  
SAN FRANCISCO    MONTREAL    LONDON  
TORONTO    MEXICO CITY    SEATTLE

INSPECTION OF RAILROAD MATERIALS AND EQUIPMENT

### Adreon Manufacturing Co.

Campbell Graphite Lubricator	Turnbuckles
Security Back-up Valve	Stop Wedges
Security Rail Brace	Brake Jaws
American Gravity Coupling	Knuckle Pins
Clarke Tension Set Tie Plate	Bolts and Nuts
Brake Shoes and Keys	Spikes

BELL TELEPHONE, Main 3226-3227

Security Bldg., ST. LOUIS, MO.

### Hewitt Manufacturing Co.

C. M. HEWITT, President

303 Railway Exchange    CHICAGO

### Journal Bearings

AND

### BRASS ENGINE CASTINGS

OFFICE AND WORKS

4153 Clayton Ave.,    ST. LOUIS, MO.

### DEARBORN TREATMENT

Prevents Foaming in Alkali Water Districts, enabling engines to make greater mileage between boiler washings, and haul greater tonnage.

DEARBORN ANTI FOAMING PREPARATIONS should be carried on the engines and applied each time water is taken, dissolving the required quantity in hot water and placing in the engine tank before filling.

DEARBORN CHEMICAL COMPANY,

McCormick Building, CHICAGO

It would surprise the late lamented if he could hear his widow telling her second husband what a noble, kind and generous man the first was.

It's all right to pray for the things you want, but it is advisable to do a little hustling for the things you must have.

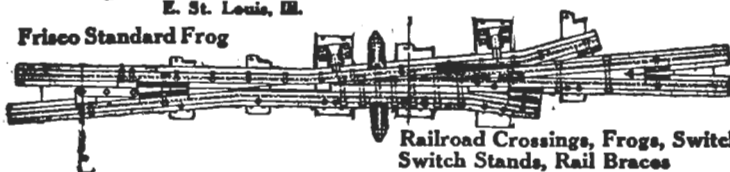
Mention us when writing to advertisers, it will help us both.

**PYLE - NATIONAL  
ELECTRIC HEADLIGHTS**

**ARE BEING USED ON OVER 26,000 LOCOMOTIVES  
ALL OVER THE WORLD**

**Elliot Frog & Switch Co.**  
E. St. Louis, Mo.

**Frisco Standard Frog**

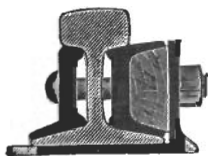


**Railroad Crossings, Frogs, Switches,  
Switch Stands, Rail Braces**



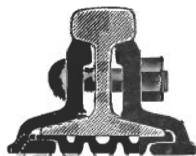
**CONTINUOUS JOINT**

Over  
50,000  
Miles  
in Use



**WEBER JOINT**

Rolled  
from  
Best  
Quality  
Steel



**WOLHAUPTER JOINT**

**THE RAIL JOINT COMPANY**

GENERAL OFFICES:

**185 MADISON AVE., NEW YORK CITY**

Makers of Base Supported Rail Joints for Standard and Special Rail Sections, also Girder, Step or Composite, Frog and Switch, and Insulated Rail Joints, protected by patents.

Highest Awards—Paris, 1900; Buffalo, 1901; St. Louis, 1904

Catalog at Agencies  
Boston, Mass. India Bldg.  
Chicago, Ill. Railway Exchange Bldg.  
Denver, Colo. Equitable Bldg.  
Portland, Ore. Wilcox Bldg.  
Pittsburg, Pa. Oliver Bldg.  
St. Louis, Mo. Commonwealth Trust Bldg.  
Troy, N. Y. Burden Avenue  
Montreal, Can. Board of Trade Bldg.  
London, E. C., Eng. 36 New Broad St.

**KIRBY LUMBER COMPANY**

**Largest Producers of Long Leaf Yellow Pine in the World**

Harry T. Kendall, General Sales Agent.  
W. E. Farman, Ass't Gen. Sales Agent.  
Houston, Texas.

Railroad and Car Material Department  
Ray Wiess, Northern Sales Manager.  
Railway Exchange Bldg., Chicago, Ill.

Mention us when writing to advertisers, it will help us both.