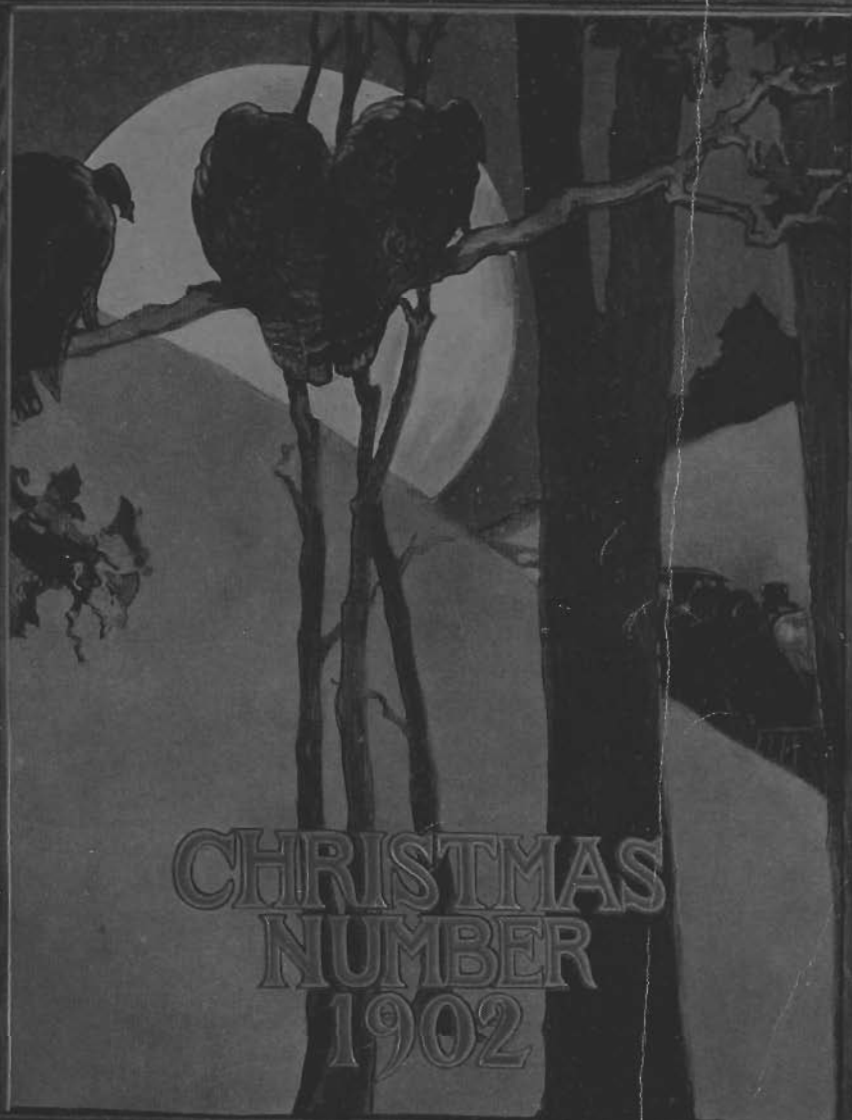
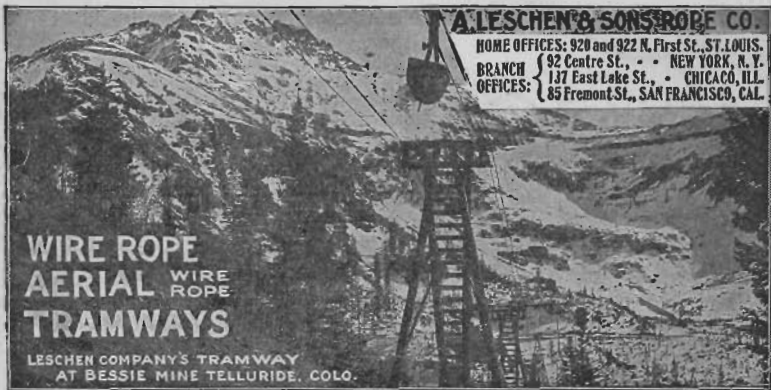


FRISCO SYSTEM



CHRISTMAS
NUMBER
1902

MAGAZINE



A. LESCHEN & SONS ROPE CO.
 HOME OFFICES: 920 and 922 N. First St., ST. LOUIS.
 BRANCH: { 92 Centre St., - - NEW YORK, N. Y.
 OFFICES: { 137 East Lake St., - - CHICAGO, ILL.
 { 85 Fremont St., - - SAN FRANCISCO, CAL.

**WIRE ROPE
 AERIAL WIRE ROPE
 TRAMWAYS**

LESCHEN COMPANY'S TRAMWAY
 AT BESSIE MINE TELLURIDE, COLO.

The "Crimped End" Fusee

The "Crimped End" protects the chemicals in the fusee, and our new cap cover protects the chemical on the cap, thus preventing premature lighting.

Just one thing to sell,
RAILROAD SIGNAL FUSEES.

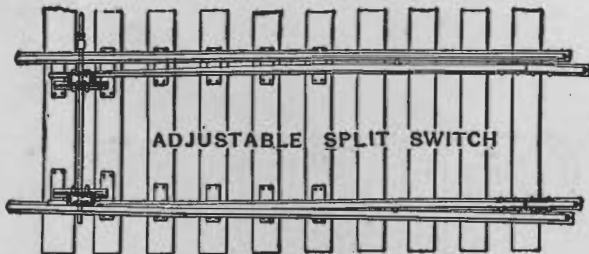
Just one thing to devote our time to,
RAILROAD SIGNAL FUSEES.

—SAMPLES FOR THE ASKING.—

HOPEWELL RAILROAD SUPPLY CO.,
 HIGHLANDVILLE, MASS.

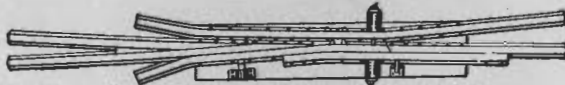


BOLTED FROG



ADJUSTABLE SPLIT SWITCH

ELLIOT FROG & SWITCH CO.,
 EAST ST. LOUIS, ILL.



"EUREKA" SPRING RAIL FROG



STEEL CLAMP FROG



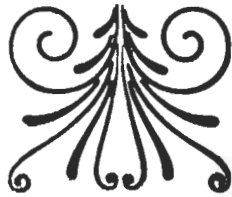
WITH SAFETY CAP

HIGH MAIN LINE STAND



MAGAZINE

DECEMBER, 1902



ISSUED BY THE
PASSENGER DEPARTMENT
OF THE
ST. LOUIS AND SAN FRANCISCO
RAILROAD

*DEVOTED TO THE DEVELOPMENT OF THE RESOURCES AND
THE PROMOTION OF THE MERCANTILE, MANUFACTURING AND
AGRICULTURAL INTERESTS IN THE TERRITORY, CONTIGUOUS
TO THAT ROAD* ◊ ◊ ◊ ◊ ◊ ◊ ◊ ◊ ◊ ◊ ◊ ◊ ◊ ◊ ◊ ◊ ◊ ◊ ◊ ◊ ◊ ◊

**GUARANTEED CIRCULATION
20,000**

FIVE CENTS PER COPY

FIFTY CENTS PER YEAR

FRISCO SYSTEM MAGAZINE.

VOLUME I.

DECEMBER, 1902.

NUMBER 11

CONTENTS.

Front Cover, designed and executed by Mr. S. L. Stoddard and Miss Rhoda Chase, St. Louis		
A Little Journey into Arkansas—Illustrated,	<i>John H. Raftery.</i>	11
Jasmine (poem),	<i>James Jeffrey Roche.</i>	15
The Great Lead and Zinc Fields—Illustrated,	<i>Thomas F. Millard.</i>	16
The Depth of Love,	<i>Charles Hanson Towne.</i>	20
Why No. 272 Did Not File—Illustrated,	<i>A. R. C.</i>	21
Texas and its Potentialities—Illustrated,	<i>Louis J. Worlham.</i>	25
Kansas City to Birmingham—Illustrated,	<i>J. C. McManima.</i>	28
Lullaby—(poem),	<i>Eugene Field.</i>	34
Profit in Angora Goats—Illustrated,	<i>Wm. R. Draper.</i>	35
A Region of Shale,	<i>Thomas F. Millard.</i>	40
Delightful Monte Ne—Illustrated,	<i>W. H. H.</i>	42
Cotton,		47
The White Flyer,	<i>E. M. Rhodes.</i>	48
Good Things About Kansas,	<i>D. O. McCray.</i>	51
Mike Feared a Relapse,		53
Holdenville, Indian Territory—Illustrated,	<i>J. W. Kief.</i>	54
Fort Smith, Arkansas,		55
North Arkansas,	<i>Olena Webb.</i>	56
Land of Health and Wealth—Illustrated,	<i>F. N. B.</i>	57
Death to the Peach Moth,		60
Minnette's Eyes,	<i>William Marion Reedy.</i>	61
A Deed (poem),	<i>Robert Loveman.</i>	63
Realm of Huntsmen,	<i>A. J. Kendrick.</i>	64
Cut it Out (poem),	<i>Willis Clinahan.</i>	67
To Helen (poem),	<i>Edgar Allen Poe.</i>	67
Weleetka, Indian Territory,	<i>Thomas F. Millard.</i>	68
Just a Line or Two,		72
A Little Out of the Way,		73
Silence,	<i>Julien Vordon.</i>	74
Facts About Indian Territory—Illustrated,	<i>Thomas F. Millard.</i>	75
A Night of Terror,	<i>Maj. Arthur Griffith.</i>	86
Oklahoma Town Building,	<i>A. K. W.</i>	88
The Winter Pool,	<i>Frank Dempster Sherman</i>	90
Dont's for Preachers,		91
Newspaper Wit,		92
Extracts from Report of the Governor of Oklahoma,	<i>Hon. Wm. M. Jenkins.</i>	93
Eureka Springs as a Resort—Illustrated,	<i>Miss F. E. Perkins.</i>	106
Frisco System Pointers,	<i>J. C. M.</i>	108

FRISCO SYSTEM MAGAZINE.

E. P. O'FALLON, Manager.

The MAGAZINE is judiciously distributed by the Passenger Department of the Frisco System, not only over its own and connecting lines, but throughout the Eastern and North-western States every month.

The MAGAZINE reaches the very best class of readers in every town on the System, and is daily read by hundreds of the traveling public on the observation and reading cars of the System.

Advertising rates: per month, \$50 per page; fractions of a page, pro rata; back cover, \$100 per month; inside cover, \$75 per month. A discount of 20 per cent on yearly contracts.

The MAGAZINE will be mailed free to any address in the United States, Cuba, Porto Rico, Mexico, Canada, The Philippine and Hawaiian Islands, for one year for Fifty Cents. For all other countries add fifty cents for postage.

Guaranteed Circulation, 20,000.

Address all communications to E. P. O'Fallon, Manager; publication office, Third and Locust Streets, St. Louis, Mo.

INDEX TO ADVERTISERS.



	PAGE
A. Leschen & Sons Rope Co.,	Inside frt. cover
Bauer Machine Works, - - -	8
Baldwin Locomotive Works, - - -	8
B. & O. S.-W. R. R., - - -	9
Central Coal & Coke Co., - - -	119
Crescent Iron Works, - - -	117
Chicago & Alton, - - -	119
Con. P. Curran Printing Co., - - -	116
Crescent Hotel, - - -	Inside bk. cover
Dr. J. Harvey Moore, Eye Specialist,	6
Elliot Frog & Switch Co., - - -	Inside frt. cover
F. E. Schoenberg Mfg. Co., - - -	6
Fairbanks Standard Scales, - - -	114
First National Bank, Kausas City, Mo.,	117
Geo. Munson, - - -	6
Hopewell Railroad Supply Co.,	Inside frt. cover
Inland Equipment Co., - - -	114
Joplin Brewing Co., - - -	118
John F. Meyer & Sons, - - -	117
J. W. Freeman, Mining Machinery, -	8
Langenberg Bros. & Co., - - -	6
Moore Manufacturing Co., - - -	113
Mobile & Ohio Railroad, -	Bk. cover and 8
Pittsburg & Midway Coal Mining Co.,	114
Schlitz, Milwaukee Beer, - - -	114
Simpson-Ladd Co., - - -	6
The Mirror, - - -	8
The Harnden Seed Co., - - -	114
The Sporting News Publishing Co.,	9
The Homeseeker & Investor, -	Inside bk. cover
The Safety Car Heating & Lighting Co.,	6
The Standard Steel Works Co., -	6
The Keeley Institute, - - -	9
Wells Fargo & Co., - - -	117
W. B. Hurst & Co., - - -	119

	PAGE
Real Estate Agents.	
Adair & McCurry, - - -	112
A. W. Ollis & Co., - - -	113
A. W. McKeand, - - -	110
Chas. A. Mitchell, - - -	113
D. H. Beamer, - - -	110
Eastern Kansas Land Co., - - -	111
Frisco System Townsite Co., - - -	112
F. H. Humphrey, - - -	111
F. V. Rowland & Co., - - -	112
Hoover & Kanaga, - - -	112
Henry Morgan, - - -	113
H.C. Williamson Land & Investment Co.	112
Hunter Realty Co., - - -	112
J. A. Holman, - - -	113
J. V. Fleming Realty Co., - - -	113
J. P. Butler, - - -	112
J. N. Groesbeeck & Son, - - -	110
Jot. M. Wilson & Son, - - -	113
Joe Hess & Co., - - -	112
James C. Topliff, - - -	111
Jackson & Foster Land Co., - - -	114
Long Brothers, Land Men, - - -	111
M. B. Locke & Co., - - -	110
Mathews & Parks, Real Estate, -	111
McKinney & Leavitt, - - -	113
Missouri Lumber & Land Exchange Co.	113
Neal Realty Co., - - -	112
Parsons & Whitsett, - - -	113
Shivers & Williams, - - -	111
Simmons & Purdy, - - -	113
The Frank J. Hess Real Estate Co.,	111
Wetzel & Weidenbach, - - -	111
W. T. Daniel, Attorney, - - -	114
Wallace & Stevens, - - -	110