

Pittsburg & Midway Coal Mining Co.

Miners and Shippers of Southern Kansas Coal. All coal screened over improved shaker screens. Capacity of mines, 2,000 tons per day.

MINES HAVE DIRECT CONNECTION WITH ALL
RAILROADS IN SOUTHERN KANSAS.

PROMPT SHIPMENTS
GUARANTEED.

MIDWAY, KAS.

Jackson & Foster Land Co.

Buy a home in the celebrated Blue Grass Region of Missouri, the greatest Corn Belt on earth. Henry County, the banner Corn and Tame Grass County of the State.

CLINTON, MISSOURI.

Farm lands, any size tracts, in the garden spot of Texas.

FOR INFORMATION WRITE TO

W. T. DANIEL,

ATTORNEY AT LAW AND LAND AGENT,
DUBLIN, TEXAS.

Drink Schlitz

The Beer That Made Milwaukee
Famous



The main difference between good beer and bad beer is in the after-effect. You notice that pure beer, Schlitz beer, does not make you bilious. Pure beer is good for you; bad beer is unhealthful. You may be absolutely certain of its healthfulness

WHEN YOU DRINK SCHLITZ BEER.

INLAND EQUIPMENT COMPANY,

Bank of Commerce Building,

ST. LOUIS, MO.

Link Metallic Car Roof.

Handy Swinging Pilot Coupler.

Snow Car AND Locomotive Replacer.

FAIRBANKS

STANDARD SCALES

ARE THE BEST,
THE BEST ARE THE CHEAPEST.

FAIRBANKS, MORSE & CO.,

ST. LOUIS, MO.

THE HARNDEN SEED CO.

Wholesale and Retail

SEEDS

GARDEN, GRASS AND FIELD SEEDS.

Onion Sets, Seed Potatoes, Flour Seeds, Seed Corn, Poultry Supplies, Raffia (for Indian basket work), both natural and colored.

Our New Catalogue for 1903 mailed on application.

KANSAS CITY, MISSOURI.

FOR DETAILS AS TO
ADVERTISING RATES IN THIS
MAGAZINE WRITE TO
E. P. O'FALLON, MANAGER,
THIRD AND LOCUST STS.,
ST. LOUIS, MO.

ALONG THE FRISCO YOU WILL FIND

UNEXCELLED BUSINESS CHANCES.

You will find excellent opportunities for the establishment of lumber mills, wood-working plants, flour mills and grain elevators, cotton and cottonseed oil mills, canneries and factories to produce many staple articles of every day use, all of which would find a ready sale in the section of the Southwest reached by the **Frisco System**.

OKLAHOMA and INDIAN TERRITORY

especially afford magnificent opportunities for the establishment of industries. Many of the towns along the **Frisco System** in these Territories offer substantial inducements in the way of free sites, bonuses, etc., to the manufacturer who will locate with them.

...THE



is anxious to aid in the development of the magnificent natural resources of the country traversed by its lines, and to further that end has established an Industrial Department to disseminate information in regard to special opportunities for investment.

Write to or call upon us for information in regard to openings for industries.

M. SCHULTER,

Industrial Commissioner,

Commercial Bldg., St. Louis, Mo.

CON. P. CURRAN

PRINTING COMPANY

LEADING
COMMERCIAL
PRINTERS
OF THE WEST



Railroad and
Commercial
Printers.
Lithographers
and Blank
Book Makers.



SOLE OWNERS AND
MANUFACTURERS OF
ECONOMY WAY-BILL
FILE AND TISSUE FILE
AND BINDER.



N. W. COR. THIRD AND LOCUST STS.

ST. LOUIS, MO.

CRESCENT IRON WORKS,

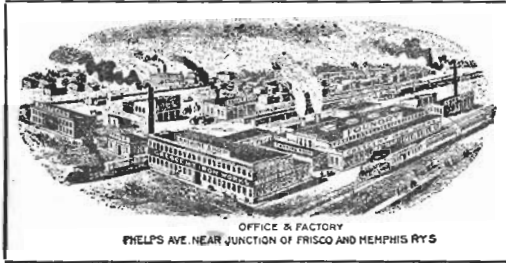
Iron Founders,

MANUFACTURERS OF

Engines,

Boilers,

**Mining and other
Machinery.**



OFFICE & FACTORY
PHELPS AVE. NEAR JUNCTION OF FRISCO AND MEMPHIS RYS

**Architectural Iron,
Structural Steel,
Beams,
Girders,
Carried in Stock.**

SPRINGFIELD, MISSOURI.

JOHN F. MEYER & SONS, Springfield, Mo.

MERCHANT MILLERS.

1,000 Bbls. "Albatross" Soft Wheat Flour. 1,000 Bbls. "Model" Hard Wheat Flour.

ELEVATOR STORAGE, 250,000 BUSHELS.

Correspondence with Wheat Shippers and Flour Buyers Solicited.

FIRST NATIONAL BANK,

KANSAS CITY, MO.

Capital,	- - -	\$250,000	✦	Profits,	- - -	\$ 450,000
Surplus,	- - -	250,000		Deposits,	- - -	13,500,000

THE EXPRESS ON THE FRISCO SYSTEM

IS OPERATED BY

WELLS FARGO & COMPANY.

**Express Carrier of Money, Jewelry, Valuables
and Freight to all points
North, South, East and West.**

Quickest, Safest and Cheapest Medium of Transportation to all Principal Cities and Towns in the United States and Canada, also to Mexico and British Columbia. Express forwarded to London, Paris, Hamburg, and all parts of Europe, South America, China, Australia and Japan.

Offices, 3,820.

Mileage, 43,052.

Rail Routes, 86,159.

Stage Routes, 1,352.

Inland Steamer Routes, 778.

Ocean Steamer Routes, 4,763.

Runs **EXCLUSIVE FAST EXPRESS TRAINS** DAILY from New York to the West, Northwest and Southwest.

Has its own **EXPRESS CARS**, equipped with fire and burglar-proof safes for valuables.

Has its own **REFRIGERATOR CARS** for large shipments of perishable matter.

Has its own **PALACE HORSE CARS** for large shipments of live stock.

Forwards matter to distant countries by Ocean Routes.

Is the **ONLY** Company that has its OWN service **ACROSS THE AMERICAN CONTINENT**, from the Atlantic to the Pacific Ocean.

Is the **ONLY** Company that has its OWN service



from **NEW YORK, SAN FRANCISCO** and intermediate points to **MEXICO**.

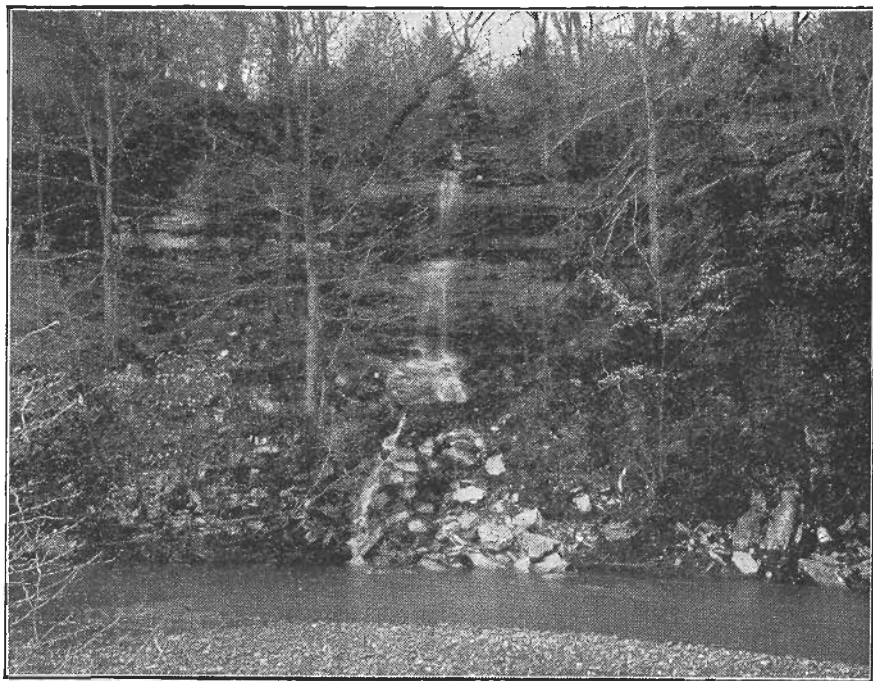
Has its own **WAGONS IN CITIES AND PROMINENT TOWNS**, where express packages are called for or delivered without extra charge, within defined limits.

Has fully equipped **CUSTOMS BROKERAGE DEPARTMENTS** at New York, N. Y., San Francisco, Cal., El Paso and Eagle Pass, Tex., and Nogales, Ariz.

Is empowered by the United States Government to carry goods "IN BOND" to inland ports of entry, thus avoiding the necessity of Customs examination at the frontier.

Has Agents or Correspondents in nearly every large city in the world.

**THERE IS
SOMETHING
TO SEE**



On the

