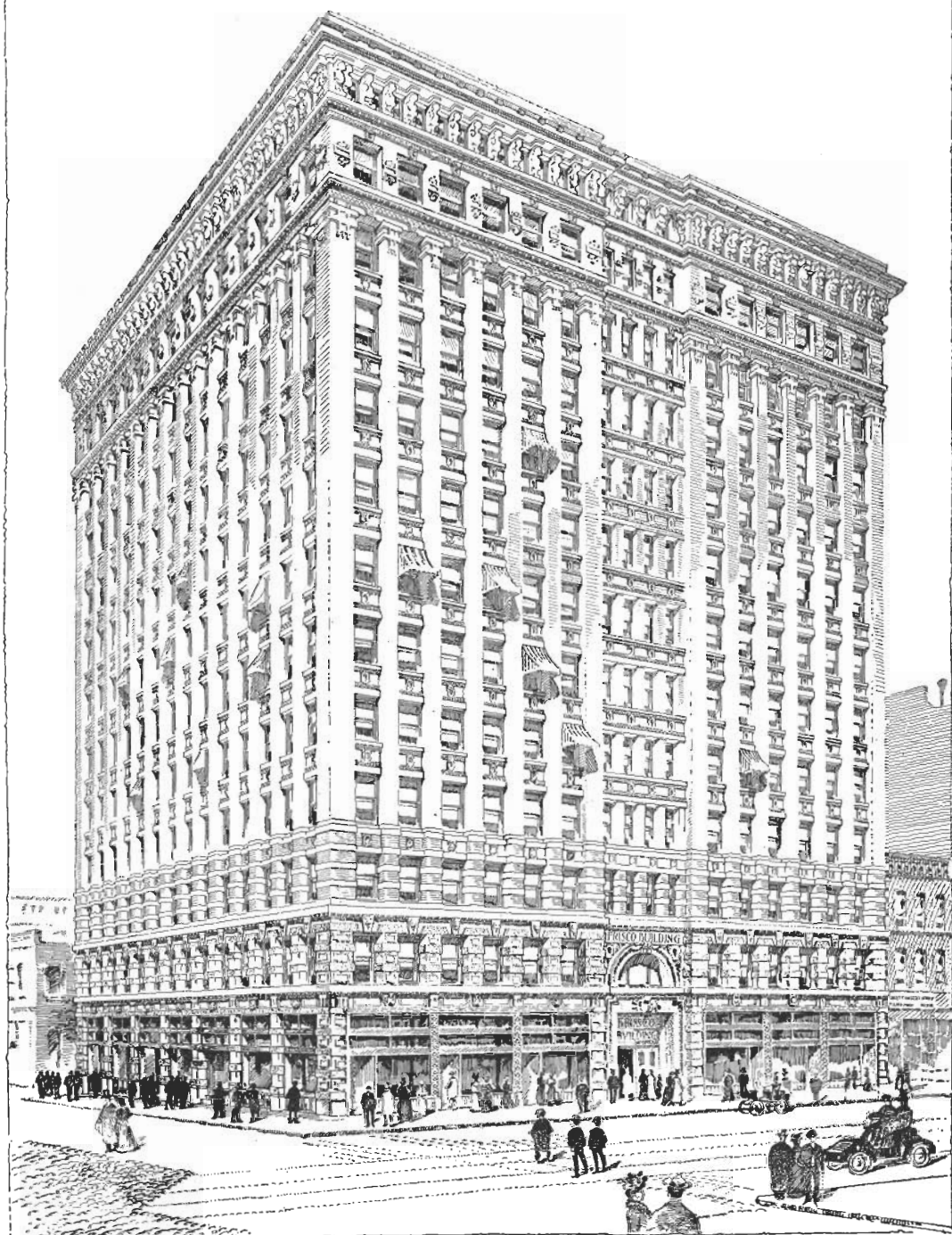


· NEW · HOME · OF · THE · FRISCO · SYSTEM ·



FRISCO BUILDING NINTH & OLIVE EAMES & YOUNG ARCHITECTS
SAINT LOUIS

JAMES BLACK,
Contractor and Builder.

ISAAC T. COOK,
Manager.

**HARDWOOD
FINISH
A
SPECIALTY.**

W. I. Cole, Prest. S. P. Locke, V. - Prest. M. H. Price, Secy.

Cole Mfg. Co.

MANUFACTURERS AND DEALERS IN

**Paints, Oils, Window Glass,
Sash, Doors, Blinds, Mouldings,
Lumber, Shingles, Etc.**

Incorporated
Nov. 8, 1883.

Memphis, Tenn.

**Farm and Log
Wagons.**

THE

Established 1862.
Incorporated 1882.

**JAMES & GRAHAM
WAGON**

**JAMES & GRAHAM WAGON COMPANY,
MEMPHIS, TENNESSEE.**

OFFICERS

C. W. SCHULTE, President.
JAS. LEE, Vice-President.
C. Q. HARRIS, Cashier.
C. B. BROOKS, Ass't Cashier.

DIRECTORS

S. H. Brooks. C. F. Farnsworth.
W. I. Cole. N. Fontaine.
J. N. Falls. W. A. Gage.
James Lee, J. Marks.
Henry Luchrmann T. K. Riddick.
R. M. McLean. C. W. Schulte.
John H. Sullivan. J. W. Wynne.

ESTABLISHED 1864.

(NATIONAL BANK No. 336)

The First National Bank
OF MEMPHIS, TENN.

**Capital and Surplus, \$300,000.
Deposits, - - \$2,500,000.**

UNITED STATES DEPOSITORY.

Your Business is Respectfully Solicited.

The Oldest Bank in the City.

Drunkenness, **Drugs, Tobacco and
Neurasthenia Patients**
Received and treated in strictest privacy at
JAMES' OLD HOMESTEAD SANATORIUM,
Raleigh Avenue and Frisco Ry., MEMPHIS, TENN.

Dr. Sam'l Morrow, the Medical Director has successfully treated over 12,000 patients. Home treatment for any of the above habits will be supplied when patients cannot come to Sanatorium for treatment. Established by Chas. B. James, the pioneer in establishing institutions in the South for the scientific treatment and cure of Drunkenness, Drug Addictions, Tobacco and Neurasthenia. Write for literature and book containing indorsement of U. S. Senators, lawyers, doctors, ministers and leading business men.

WARRIOR MINING STOCK ADVANCES TO \$2.00 A SHARE ON DECEMBER 20th.

This is positive—after December 20th not a share of Warrior stock will be offered for less than \$2.00 a share by the company. The advance would be made at once, but the directors decided to give a few weeks notice to those who have been figuring on buying stock, but have not yet closed the deal.

About six months ago Warrior stock advanced from 5c. We stated then that the advance would occur on a certain day. We had to refuse orders for over 300,000 shares of stock because they came too late. Don't be one of the late ones this time. If you don't buy stock NOW you'll regret it sure. To those who already own stock we say BUY more—to those who think of buying we say DO IT NOW—to those who know nothing about "Warrior" stock we say INVESTIGATE QUICK and BUY QUICK.

Warrior Stock is Offered until December 20 at 10c a Share

After that Date Not a Share Sold for Less than \$2.00 by the Company.

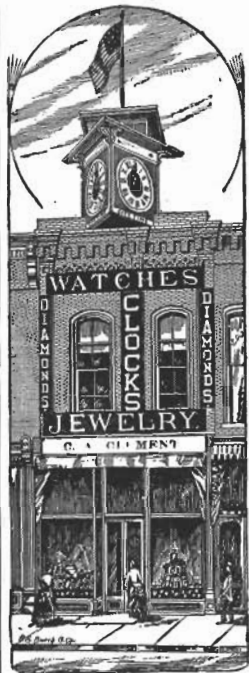
MAKE ALL CHECKS AND MONEY ORDERS PAYABLE TO

THE WARRIOR MINING CO., 302 Continental Bank Bldg., St. Louis

Full particulars of Warrior Properties, Prospects, Officers, Directors, etc., free for the asking. Write us.

C. A. CLEMENT

Springfield, Mo.



**Jeweler and
Silversmith,**

**Diamonds,
Loose and
Mounted,
Fine Jewelry,
Sterling
Silver.**

MAIL ORDER TRADE SOLICITED.

Call and visit our
store when in the city.

Bradley Realty Bank and Trust Co.

MUSKOGEE, - - - INDIAN TERRITORY.

Capital, \$260,000.

75,000 Acres for Lease.
The Land Company of Indian Territory.
Forty Creek Citizens are the stockholders.

Write for Bradley's Guide and Section Map of Creek Nation, in colors.
Finest map of its kind published, price 50 cents.
Write for Bradley's Manual, statistical information pertaining to
Indian Territory. Rules and Regulations for sale of land.
Historical data and treaties with the Five Civilized Tribes, price
\$1.00, including map.

Collections, Adjustments, Mercantile Reports.
Collections made anywhere in the United States.

ESTABLISHED 1892.

Attorneys at Law. Notary Public.

National Law and Credit Co.

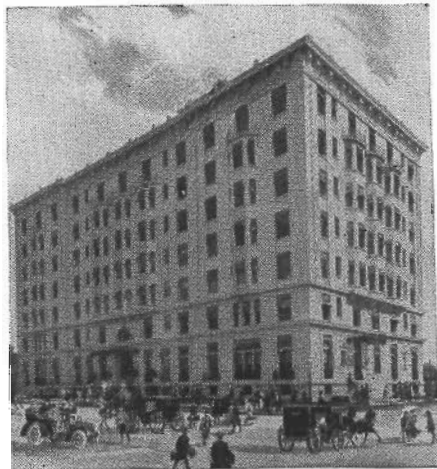
COLLECTION AGENCY.

We act as Executor, Guardian or Trustee. Fire Losses Adjusted,
Stocks Negotiated.
Any Legal Business Promptly Attended to.
Abstracts Furnished.

Suite 45 Laclede Building, S. W. Cor. 4th and Olive Streets,
Phone, Main 4062-A. ST. LOUIS.

The New Washington

Kingshighway and Washington Boulevard,
ST. LOUIS, MISSOURI.



ABSOLUTELY FIRE-PROOF.

Accommodation for Transient or Permanent Guests.
Rates No Higher than other First-Class Hotels.

STRICTLY FIRST-CLASS SERVICE. TABLE D'HOTE DINNERS.

Arrangements can be made for Weddings
and Parties.

JOHN C. KNAPP.

**QUEEN & CRESCENT
ROUTE**

Shortest Route and Quickest Schedules

BETWEEN

**Shreveport, Birmingham,
Meridian, Jackson,
Chattanooga, Cincinnati,
New York, Washington,
Northern and Eastern
Points.**

Pullman and Dining Car Service.

For Rates and Information apply to

J. C. CONN, D. P. A., Chattanooga, Tenn.
A. B. FREEMAN, T. P. A., Birmingham, Ala.
W. C. RINEARSON, G. P. A., Cincinnati, O.



Green, Gold and Brown Train

DAYLIGHT SPECIAL

BETWEEN

St. Louis AND Chicago

LIBRARY, PARLOR AND DINING CARS.

C. C. McCARTY,
D. P. A., St. Louis.

A. H. HANSON,
G. P. A., Chicago.



Improved and Unimproved Farms for Sale IN THE Productive Fruit Belt OF MISSOURI.

J. J. FORESTER, St. James, Mo.

I HAVE all kinds of farms—fruit, grain, stock—and wild lands for sale in Dent, Crawford and Washington Counties.

Write for particulars to

C. H. TURNER & CO.,
CUBA, MO.

FOR SALE 100 Missouri Farms 100

Fruit, Grain, Stock and Poultry.

Write for free list. **W. J. CHENEY,**
Next door to People's Bank, CUBA, MO.

Victor Wm. Rietz Realty Co. REAL ESTATE AGENTS—FARMS A SPECIALTY. Make you terms to suit.

St. Louis Office—2705 S. Broadway. **ST. JAMES, MO.**
Write for Land Circular. Mention this paper.



"PUT ME OFF AT SNYDER"

Snyder is the big division town at the junction of the O. C. & W. and the B. E. & S. (both Frisco lines), in Kiowa Co., O. T. If you have not seen it, you have missed an opportunity for choice investments and business location. Write us for plats and particulars.

Frisco Townsite Co., Oklahoma City, O. T.

MISSOURI FARMS. Send for my big bargain list of fine farms for sale. I have a 300-acre black prairie farm; fair improvements; price \$15 per acre. A fine 40-acre fruit farm in bearing; good improvements, price \$700 for whole farm. Timber lands for an investment. Mild, healthful climate. State your wants.

W. A. KOONS,
ST. JAMES, PHELPS CO., MO.

REMOVAL NOTICE.

The Walter A. Zelnicker Supply Co. of St. Louis, manufacturers and dealers in Railway, Mill and Factory Supplies, announce that their branch office in Houston, Texas, has been removed to 603 Binz Building. Mr. H. E. Miller, who for many years has been in charge of the office will continue as manager.