

Missouri, Kansas and Oklahoma Farms.

Kansas City Real Estate.

# RAY-QUADE

## INVESTMENT CO.

Business Property, Investment Property, Suburban Tracts, Modern Homes. Farms and Ranches a specialty.

Dr. RICHARD RAY, Pres.  
W.S. QUADE, Sec'y & Treas.  
Phones,  
Bell, 3373 Red.  
Home, 3995 Main.

We do a General Real Estate and Brokerage Business, buy, sell and exchange hotels, rooming houses, stocks, merchandise stores and business chances of all kinds.

Rents Collected, Taxes Paid, Insurance Placed.

Loans Secured, Our Specialty. Farm lands and the care of non-resident property.

119 East 8th, KANSAS CITY, MO.

## FARMS, RANCHES,

And wild lands. Tell us what you want, we have it. 500-acre improved stock farm, \$25 per acre. 1,600-acre ranch at \$3 per acre. A large list of all sizes and prices. Finest of climate.

DIXON & SHATTUCK, Springfield, Mo.

## 3,000 Farms and Ranches

For sale on easy terms, \$1 to \$25 per acre, in Mo., Kan., Colo., Ark., Okla., I. T. and Texas. We answer all inquiries promptly. Write for list and state where you want to locate.



Immigration Agents.

W. J. ADAMS & CO.,

714 N. Y. Life Bldg., Kansas City.

## MARSHFIELD, MISSOURI,

County Seat of Webster County.

### THE REAL APPLE COUNTY.

Also the finest stock and grass land in the State. It will astonish you to know how cheap these good lands are. State what you want, we will furnish photograph and description of a farm that will surely suit you. Case & Shelton.



## We Have

farm and timber lands in Missouri, Arkansas and Louisiana, farm and grazing lands in Kansas and Oklahoma. If you are looking for

any of these write us for list.

MISSOURI LAND & INVESTMENT CO.

Altman Building, KANSAS CITY, MO.

## RICE LANDS IN THE COAST COUNTRY OF TEXAS.

Oats, Vegetables and Fruits. The climate is very mild and pleasant all the year. The water is pure and soft. The rainfall plentiful. Blue stem grass grows two tons per acre. Stock live on the range all the year. Join our low rate excursion January 5th, and go with us and see these lands. Railroad fare refunded to purchasers. Write for our booklet "Facts" about Texas.

### THE TRACY LAND AND EMIGRATION CO.,

Wichita, Kansas, Katy, Texas,

421 New York Life Building,

KANSAS CITY, MO.

## Lawrence County THE BANNER

Wheat, Grass and Fruit County in Southwest Missouri.

For Particulars address

### Lawrence County Land Co.

Immigration



Agents,

Send 10c for Pocket Map of Missouri.

Aurora, Mo.

## DO YOU WANT TO TRADE

Your stock of merchandise, livery stock, income property or farm, for a good stock and crop farm near Kansas City?

IF YOU DO

We have some excellent bargains, whose owners will consider an exchange, and your property will be considered as

SO MUCH CASH.

Write and tell us what you want and what you have to offer.

OVER 100 FARMS TO CHOOSE FROM.

Send at once for our free list of Western Missouri and Eastern Kansas farms, for sale or exchange.

### ATKINS & MacDONALD,

217-218 Sheidley Building,

KANSAS CITY, MO.

Reference: American State Bank.  
Write for price lists and descriptions.

Immigration  
Agent

**FRISCO**

## JOHN FERRITER, REAL ESTATE.

Fine Farms in the great Arkansas Valley and Eastern  
Kansas and Ranches in Western Kansas  
WICHITA, KANSAS.

## KANSAS LANDS FOR SALE.

Good land, fruit of all kinds, Dairying a specialty, fine  
grass land with good spring water at from \$15 to \$40  
per acre. Special courtesies shown to land seekers.  
Write me before coming West, all information cheer-  
fully furnished. Address,

**FRISCO** Immigration  
Agent.

J. M. PARRISH,  
ATLANTA, KAS.

## CHENAULT BROTHERS,

FORT SCOTT, KANSAS.

Farms for sale in the best section of  
Southeast Kansas and Southwest Mis-  
souri. Call on us if you want a good  
farm, or write us telling what you want.  
We know we can suit you in this section  
of Kansas or Missouri. We have all  
kinds of farms, from an 80-acre tract up  
to several sections, for sale at reasonable  
prices, and on reasonable terms.

## PUMPKIN CREEK VALLEY

IN  
KANSAS  
In the Gas Belt.

Fine Farming Lands.

Large list of highly improved  
farms in this valley on reasonable  
terms. Write for circulars and  
full information.

**MASTERS & BOTTORFF,**  
Mound Valley (Labette Co.), Kas.  
Immigration Agents for Frisco System

If you can't leave your Wife's  
Relations, don't come to Linn  
County, Kansas, for you will  
surely buy a farm of E. P. McCarty  
& Sons if you do. ❀ ❀ ❀ ❀

Mudd Pneumatic Track Sander  
Linstrom Non-Freezing Syphon Pipe  
Western Pneumatic Bell Ringer  
Saling Metal Draft Beam  
Acme Pipe Clamps. Car Doors  
**WESTERN RAILWAY EQUIPMENT CO.**  
ST. LOUIS, MO.

You should own  
something in **Sulphur, I. T.**

WRITE TO

**J. H. WRIGHT & CO.,**  
Real Estate Agents.

**For Homes** in The New South-  
west, or business  
chances of any kind, call on or address,

**LESTER L. PRICE,**  
CHICKASHA, INDIAN TERRITORY.

A. A. Kinney.

**FRISCO**

U. L. Jackson.

## Muskogee the Metropolis

Is practically the capital of the Indian Territory. It is  
here where the Dawes Commission and Indian Agent,  
who have charge of the allotting and final distribution  
of all the Indian land in the Creek, Cherokee, Choctaw,  
Chickasaw and Seminole Nations are located. The firm  
of KINNEY & JACKSON have been in the Real Es-  
tate business in Muskogee for the past ten years, and  
are thoroughly conversant with all Indian Titles.  
They make a specialty of city property, and always give  
their customers benefits of "Snaps." Look them up.  
It will be money for you.

**KINNEY & JACKSON,**  
MUSKOGEE, INDIAN TERRITORY.

## Sequoyah Land & Investment Co.

Has 25,000 acres of fine farm lands  
to lease, for a term of five years, at  
the rate of 50c to \$1 per acre per year  
**CLAREMORE, - INDIAN TERRITORY.**

## 20,000 Acres

In one tract on Frisco System, suitable for Angora Goats. We also  
have thousands of acres of choice improved and unimproved agri-  
cultural and grazing lands for lease, at very low figures. Timber  
Lands! Yes? Correspondence solicited. Colored maps mailed  
free, describing country and railway systems in the Cherokee Nation, Indian Territory.

Address **Southwestern Investment and Construction Company,**  
TAHLEQUAH, INDIAN TERRITORY.

## \$100,000 Worth of Muskogee City Property FOR SALE.

This is improved or unimproved on easy terms. No better investment in the Southwest to-day.  
Come, see and be convinced, or write for full particulars to

**LANNING, DAVIS & CO., 217 East Broadway, MUSKOGEE, I. T.**

Representatives of the Lanning-Teddes Mining and Development Co.

# 60,000 ACRES

## RICH ALLUVIAL LAND

Partly Cleared and partly Second Growth and  
Virgin Forest, in

Madison Parish, Louisiana,

For sale in large and small tracts.

Caldwell & Smith, Memphis, Tenn.



# MONEY TO LEND

On Farms and Plantations  
situated in the States of

ARKANSAS, LOUISIANA AND  
MISSISSIPPI,

# ON LONG TIME

AND REPAYABLE IN  
INSTALLMENTS,

Caldwell & Smith, Memphis, Tenn.

# ALL OF 'EM.



## F. D. FULLER,

Immigration Agent,

MEMPHIS, TENN.

OKLAHOMA, INDIAN TERRITORY and TEXAS. Both Farm Lands and City Properties in the best localities. I GO WITH YOU PERSONALLY to visit any and all points. Write me for full information, 311 Main Street, Memphis, Tenn.

# H. L. GUION CO.

ESTABLISHED 1869.

## Real Estate and Rental Agents,

FIRE INSURANCE,

278 Second Street,

Memphis, Tenn.

# INDUSTRIAL SITES

We make a specialty of locating industrial

enterprises in our wonderful city, and can offer many desirable sites on the "Frisco System" and all other lines entering Memphis. \* \* \* \* \*

**F. W. FAXON & CO., 285 Main Street, Memphis, Tenn.**

# TIMBER. FARMS.

Did you know the best timber and the richest farms in the world are to be found in the Mississippi Valley? Write us before purchasing.

**R. W. PARHAM & CO.,**

Box A.

MEMPHIS, TENN.

# Lands for Sale

We control over 500,000 acres of the best lands in the alluvial districts of Arkansas, Mississippi and Louisiana, and will sell them in tracts to suit the purchaser; very cheap and on easy terms. If you want to buy a **Farm, Plantation, Timber or Timber Land,** be sure to call on or address

**J. W. James & Son,**

15 Madison St.

MEMPHIS, TENN.

SEND FOR LIST.

# CHEAP

**Southern Farms and Timber Lands in the Yazoo and Mississippi Delta, also Arkansas and other Southern States.** \$35 and \$50 per acre for land that rents for \$6.00 per acre annually.

For information call on or write to

**FRANK TRIMBLE & CORBITT,**

Reference, First National Bank, Memphis, Tenn.

284 Main Street, MEMPHIS, TENN.

# FARMS OKLAHOMA AND TEXAS.

For Particulars regarding the best Farming Land in the Southwest, Write

**WHITE, HAGLER & MCKINNEY, Vernon, Tex.**

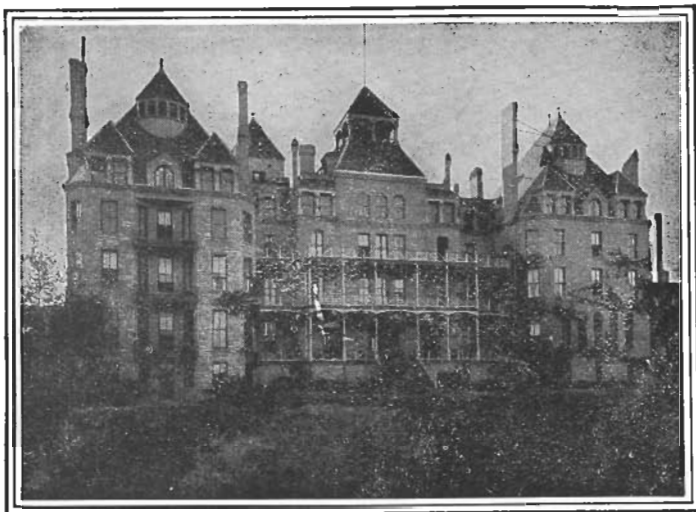
# \$1,000 FOR A GIRL BABY.

How many parents have said that? Say it no more. I have discovered the law in nature that controls the sex question, so that boy or girl children may be born into family as desired. Newly discovered, easily understood and absolutely correct. Send \$1 and the secret is yours.

Dr. F. T. DENSON, Amarillo, Tex.

# CRESCENT HOTEL,

EUREKA SPRINGS, ARK.



All-Year Resort.



UNDER THE MANAGEMENT OF

W. M. WALKER.

**DON'T BUY  
A FARM  
OR  
LOCATE  
ANYWHERE**

Until you have read our big illustrated magazine,

## *The Homeseeker and Investor*

every issue of which is replete with definite and satisfactory information regarding

**Immigration, Irrigation, Our Islands, Sister Republics, Up North,  
Down South, Out West, The Southwest, and the Great Northwest.**

Other departments treat of investment matters, including oil, mining, etc., and special attention is given to answering all inquiries concerning the value of farm lands, mining and industrial stocks.

New railroad extensions are noted and new towns mentioned, affording a complete compendium of all that is taking place in the development of the most promising sections of this and neighboring countries.

### **The Homeseeker and Investor**

will be sent for an entire year for \$1.00 (cash or stamps). 3 months' trial subscription, 25 cents. No free copies; don't ask for them.

**THE HOMESEEKER AND INVESTOR PUBLISHING CO.,**

Please mention this Magazine.

Suite 1204-1205, 109 Randolph St., Chicago, Ill.