

ALL OF 'EM.



F. D. FULLER,

LAND AND IMMIGRATION AGENT,
MEMPHIS, TENN.

OKLAHOMA, INDIAN TERRITORY, TEXAS AND ARKANSAS. Farm Lands and City Properties in the best localities. I have a large list. Write me for full information. Memphis Nat. Bank Bldg., 30 Monroe St.

FARMS IN FRANKLIN COUNTY, MO.

No. 58. The Best Stock Farm in the County.

Franklin adjoins St. Louis County, has no bonded debt and is one of the most prosperous counties in the state. I own and offer for sale, in any quantity, more than 1300 ACRES OF FARM LANDS for \$10 to \$25 an acre, owing to class of improvements; also I am the agent for the sale of 100 FARMS at extremely low prices and upon reasonable terms. In answering, please state which you want, a poultry, grain, fruit or stock farm. Address

JOSEPH H. BENNETT,
SULLIVAN, MISSOURI.

485 ACRES on the Bourbeuse River, 270 acres in cultivation, all of the remainder is covered with a fine growth of timber, and nearly all of it tillable. This farm has two sets of improvements and can be divided into two farms; one house has 8 rooms, the other 3 rooms, cisterns, smoke houses and cellars at both houses, small orchard at large house. Having three-fourths of a mile of river front and two spring branches the farm is splendidly watered; it is surrounded on three sides by a public road; has school adjoining; church 2 miles; small inland town within 3 miles, and only 4½ miles from R. R. station. Price, \$20 an acre.

GREEN FOREST The New Fruit Center of Northwest Arkansas

The Plateau Country, East Carroll County, where crop failures are unknown; where the attitude ranges from 1,400 to 2,100 feet; where no cyclones, droughts or long cold winters ever come; where the man with limited means can secure a home; where the investor can make 40 per cent. Address WHITTAKER & WEST, Frisco System Immigration Agent, Green Forest, Arkansas.

FRANKLIN COUNTY, MO.

Why pay \$80 to \$100 per acre for lands when you can get as good or better in Franklin County, Mo., for from \$10 to \$25 per acre. We have the BEST fruit, berry and farming lands. Excellent market 62 miles from St. Louis, directly on main line of Frisco Railroad. Address D. N. GIDEON, Stanton, Mo.

BUTLER COUNTY, KANS., FARMS FOR SALE.

ing scores of wealthy men.

Buy a Farm in the great Walnut Valley, the greatest Corn and Alfalfa lands in the State. The Cattle Industry rapidly making scores of wealthy men. Address, J. W. RIFFE, Real Estate Agent, Augusta, Kansas.

THIS IS A PEACH

Immigration Agents Frisco System.

COUNTRY, it is also the best Apple Country in the southwest. Write us if you are in the market for farms, fruit, coal or timber lands. Prices range from \$5.00 acre up.

FT. SMITH REAL ESTATE CO., 709 Garrison Avenue, FORT SMITH, ARKANSAS.

NORTH ARKANSAS LAND

CUNNINGHAM & CO., BERRYVILLE, ARK., for finely illustrated booklet and price list free.

In Carroll County. Best country on earth for homeseekers and investors. Farm, fruit and timber lands. Write

FARM BARGAINS

In East Kansas or West Missouri, including the famous Natural Gas and Oil Belt of southeast Kansas. Sell or trade. Can match you on anything. Address HANNUM LAND CO., Cherryvale, Kansas.

BROKERS IN OIL AND GAS LANDS.

INDIAN TERRITORY LANDS

For Sale, Lease or Rent in the CHICKASAW NATION. Come now and secure you a home in the best country on earth. Ardmore is located in the Oil Belt. Information furnished free.

W. P. POLAND,
ARDMORE, IND. TER.

BOOHER & PATTON,

RED FORK, INDIAN TERRITORY.

Oil Lands leased and operated.
Farm and timber lands bought and sold, coal lands also leased.

Information furnished.

Write us.

OZARK FARMS!!!

The richest farms, the finest fruit, the best stock, the healthiest climate in the world.

We can show you. Address communications to

JOSEPH J. CRITES REALTY COMPANY,
(Successors to Crites & Garrison Realty Co.)

F. E. DOWD, Manager. ROLLA, Phelps Co., MO.

LACLEDE COUNTY, MO.

The Queen of the Ozarks.

IT IS THE BEST ALL-ROUND FARMING COUNTY IN THE STATE FOR GRAINS, GRASSES AND FRUITS, AND FOR STOCK AND POULTRY RAISING. IMPROVED FARMS ARE FOR SALE CHEAP. WRITE J. H. QUINN & SON FOR PRICES AND PARTICULARS, LEBANON, MISSOURI.

CRESCENT HOTEL,

EUREKA SPRINGS, ARK.



All-Year Resort.



UNDER THE MANAGEMENT OF

W. M. WALKER.

**DON'T BUY
A FARM
OR
LOCATE
ANYWHERE**

Until you have read our big illustrated magazine,

The Homeseeker and Investor

every issue of which is replete with definite and satisfactory information regarding

**Immigration, Irrigation, Our Islands, Sister Republics, Up North,
Down South, Out West, The Southwest, and the Great Northwest.**

Other departments treat of investment matters, including oil, mining, etc., and special attention is given to answering all inquiries concerning the value of farm lands, mining and industrial stocks.

New railroad extensions are noted and new towns mentioned, affording a complete compendium of all that is taking place in the development of the most promising sections of this and neighboring countries.

The Homeseeker and Investor

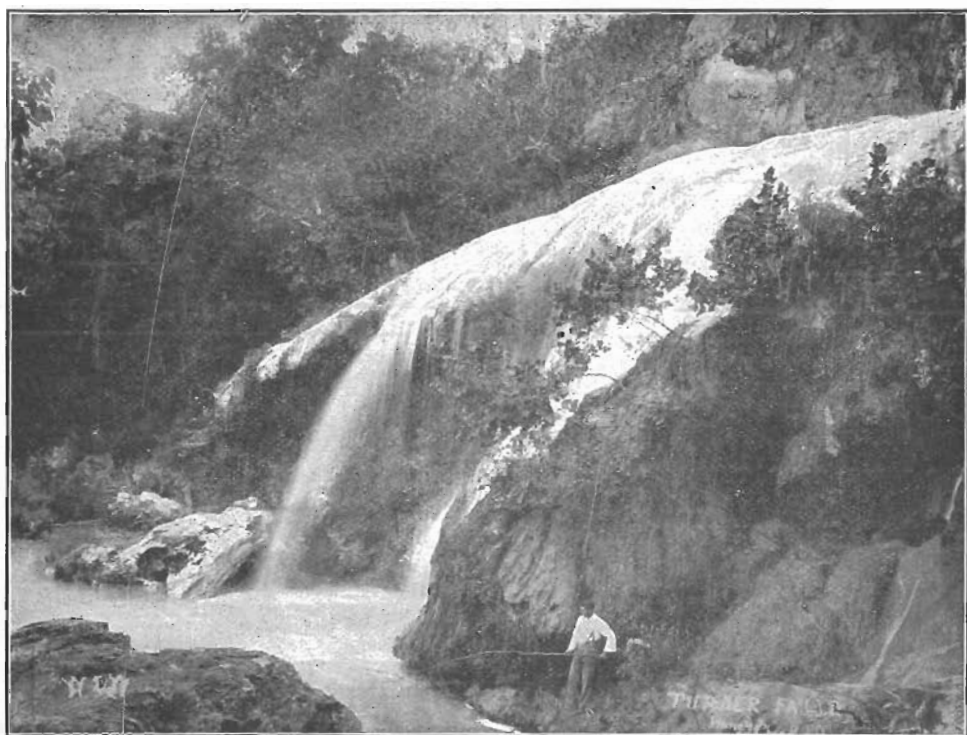
will be sent for an entire year for \$1.00 (cash or stamps). 3 months' trial subscription, 25 cents. No free copies; don't ask for them.

THE HOMESEKER AND INVESTOR PUBLISHING CO.,

Please mention this Magazine.

Suite 1204-1205, 109 Randolph St., Chicago, Ill.

THERE IS
SOMETHING
TO SEE



On the

FRISCO
SYSTEM