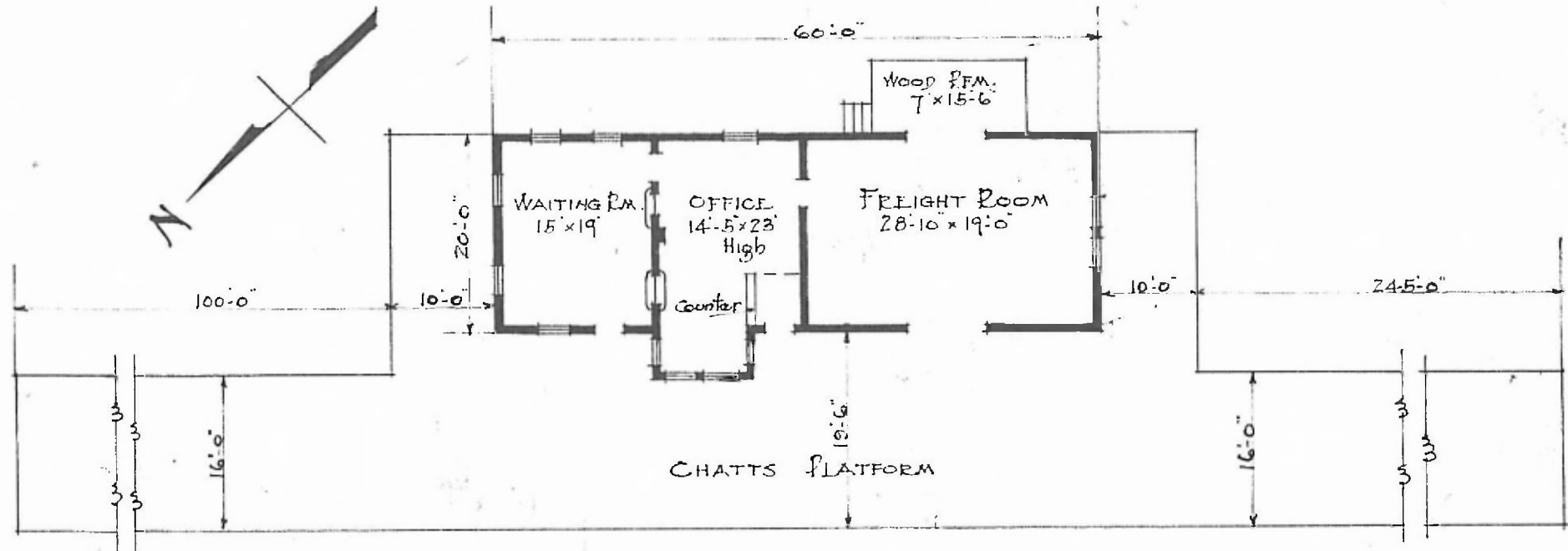


ERECTED 1898
 TYPE FRAME
 FOUNDATION. PILE HEADS.
 WALLS. 2"x6"
 ROOF { TYPE. GABLE. SHINGLE.
 PITCH. 1/4
 HEATING. STOVES

FLOOR . 7/8"x3 1/4"
 FINISH { INSIDE. 7/8"x5 1/4" M+B. VAINSCOT. 5:8"
 OUTSIDE. 1"x12" BOXING & PATTERNS.
 CEILING HEIGHT. 11'-10" FREIGHT. 11'-11"
 LIGHTING . LAMPS.
 SANITARY FACILITIES. OUTSIDE

EPSTEIN DIV.
 SPRINGFIELD SUB
 STATION No. 257



FLOOR PLAN.
 SCALE 1/16" = 1'-0"

PASSENGER STATION.
 BILLINGS, MO.

MAY 27, 1915.