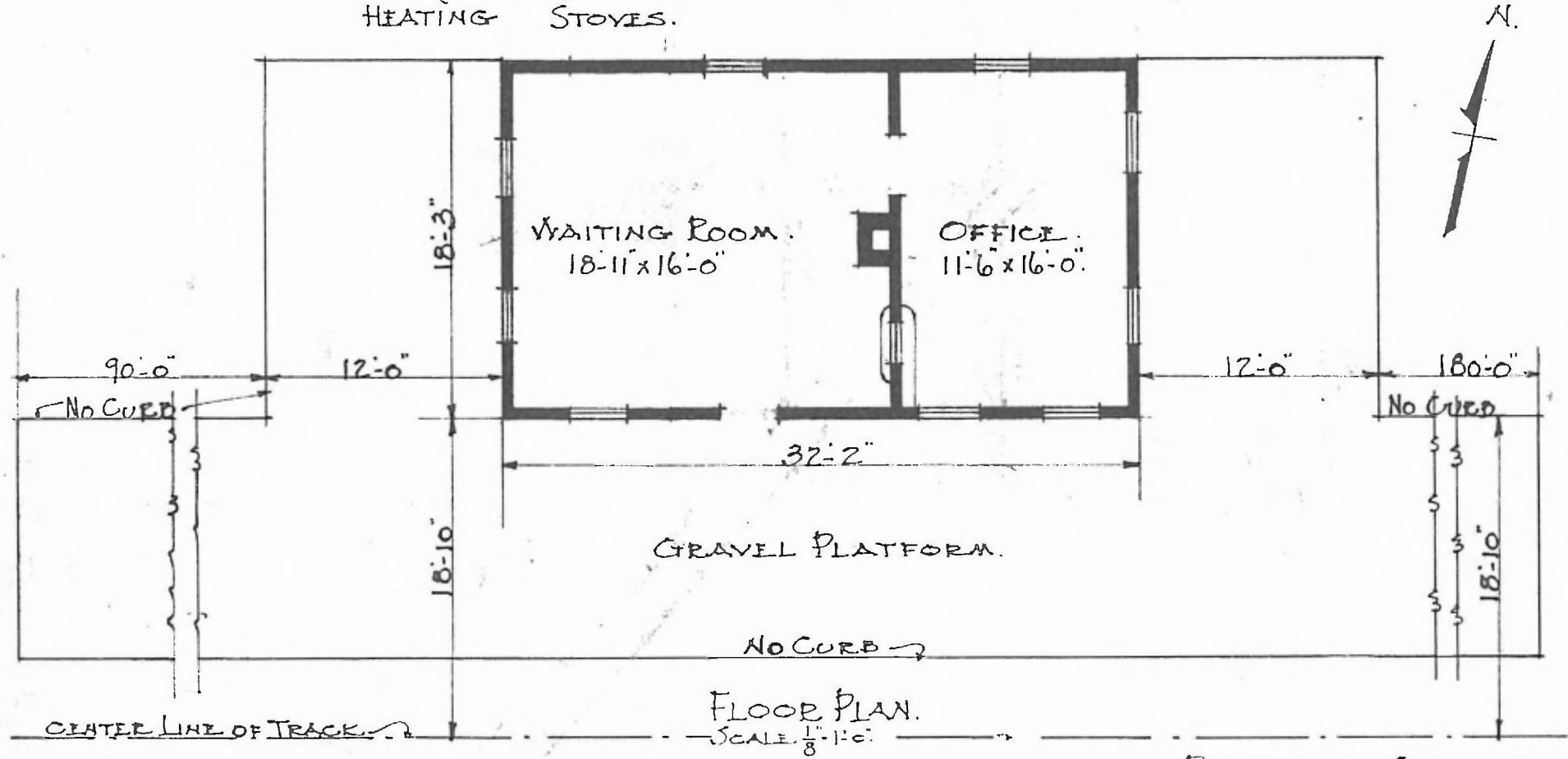


ERECTED 1868.
 TYPE. FRAME.
 FOUNDATION. WOOD BLOCKS.
 WALLS. 2x6"
 ROOF. { TYPE GABLE. SHINGLE.
 PITCH. 1/3
 HEATING STOVES.

EASTERN DIV
 ROLL A SUB
 FLOOR 7/8 x 3 1/4" PINE.
 FINISH { INSIDE. 7/8 x 3 1/4" BEADED STAIN No 39
 OUTSIDE BOARDS & BATTONS.
 CEILING HEIGHT. 11'-5"
 LIGHTING LAMPS.
 SANITARY FACILITIES. OUTSIDE.



JAN. 12. 1917.

PASSENGER STATION.
CATAWISSA, MO.