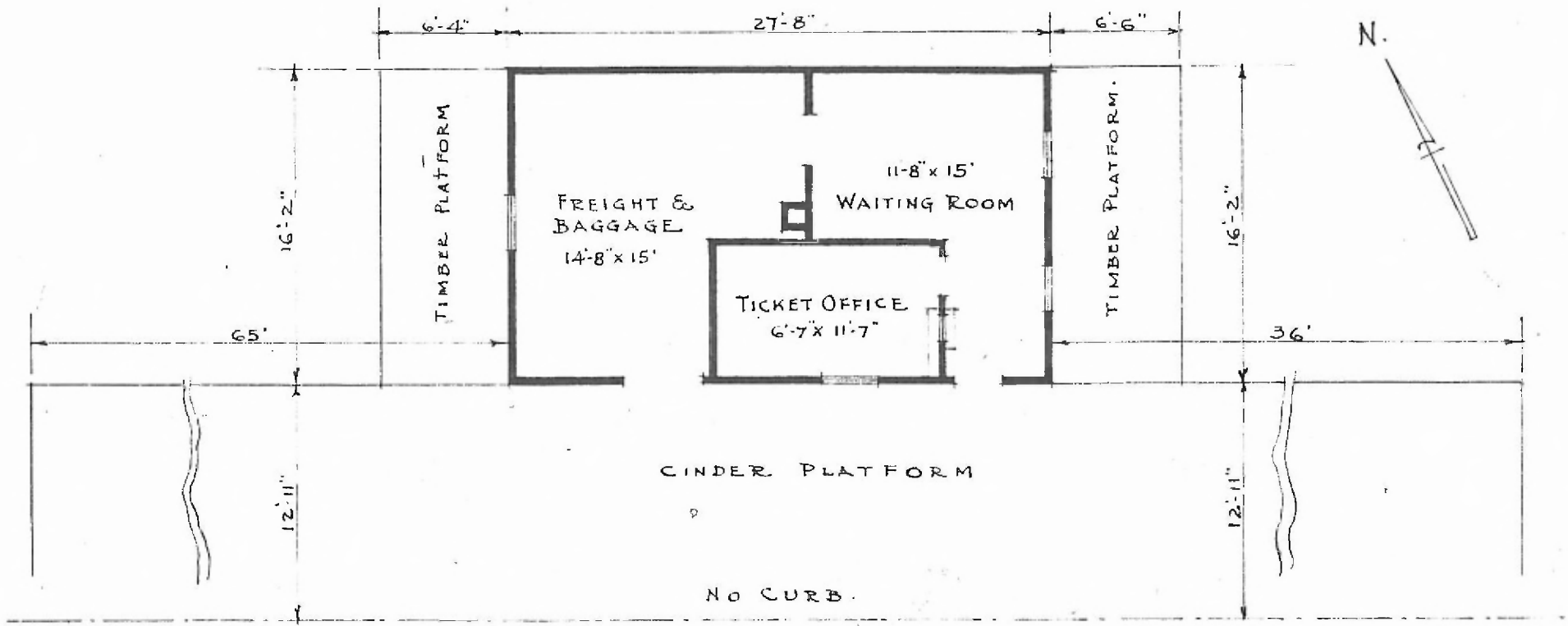


ERECTED 1884
 TYPE FRAME
 FOUNDATION TIMBERS
 WALLS 2"x4"
 ROOF { TYPE - GABLE - SHINGLES.
 PITCH - 1/3
 HEATING STOVES

FLOOR 3/4"x3/4" Y. PINE
 FINISH { INSIDE
 OUTSIDE
 CEILING HEIGHT 9'-3 1/2"
 LIGHTING OIL LAMPS
 SANITARY FACILITIES - OUTSIDE TOILETS.

EASTERN DIV.
 CLINTON SUB
 STA. NO. D80



FLOOR PLAN
 SCALE: 1/8" = 1'-0"

PASSENGER STATION AT
 HARVEY MO.