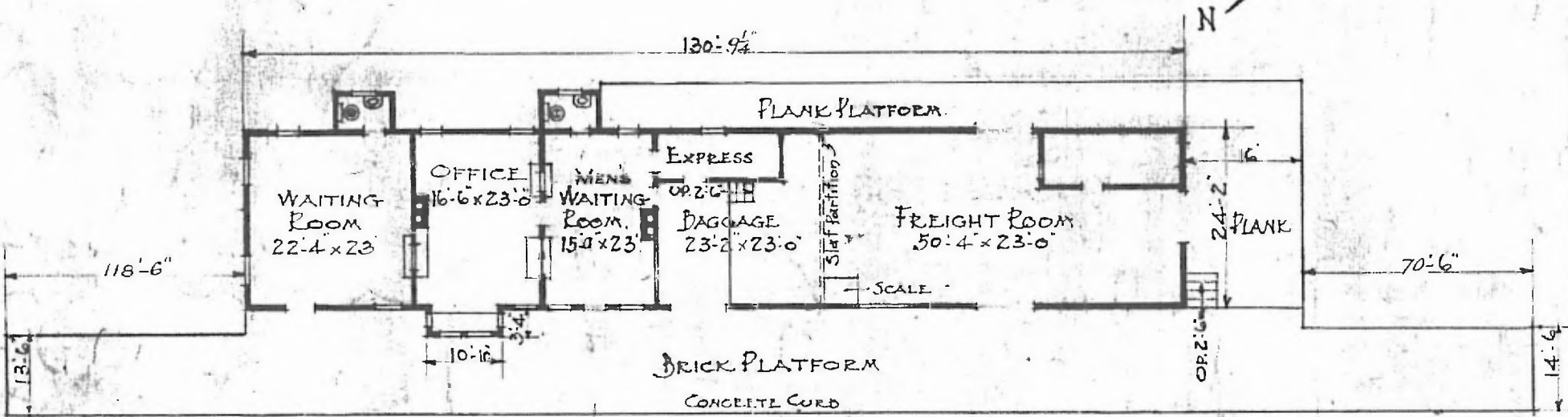


ERECTED 1924.
 TYPE - HOLLOW TILE
 FOUNDATION - 10³/₄ CONCRETE
 WALLS - 8¹/₄ TILE
 ROOF - { TYPE GABLE OVER WTD. ROOMS
 PITCH 1/3 FLAT OVER FREIGHT RM.
 HEATING - STOVES.

FLOOR - CEMENT, WOOD & PLANK
 FINISH { INSIDE 1/8" x 3/4" BEADED.
 OUTSIDE
 CEILING HEIGHT - 11'-08"
 LIGHTING - ELECTRIC.
 SANITARY FACILITIES - INSIDE TOILETS.

EASTERN DIV.
 LEBANON 5013
 STA. NO. 182



FLOOR PLAN.
 SCALE - 3/64" = 1'-0"

REVISED. JULY 1, '24.
 DEC. 14, 1916

COMBINATION STATION
 LEBANON, MO.