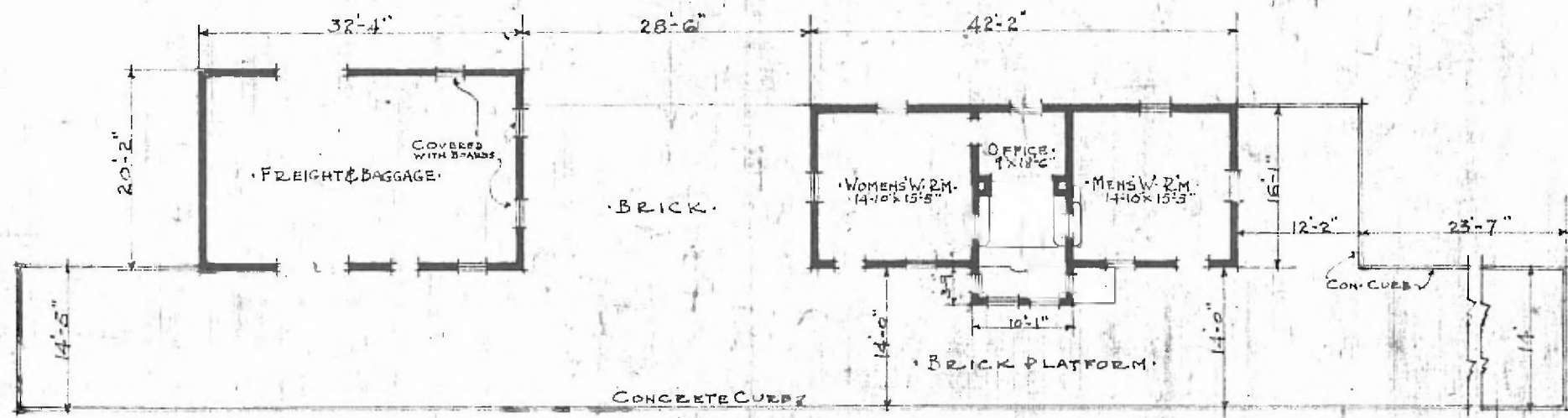


40

ERECTED. 1907.
 TYPE. FRAME.
 FOUNDATION. PILE HEADS.
 WALLS. 2x6" STUDS.
 ROOF { TYPE. HIP SHINGLES.
 PITCH. APPROX. 4.
 HEATING. STOVES.

FLOOR. 3/4" x 3/4" Y. PINE.
 FINISH. { INTERIOR. 3/4" x 3/4" BD. CEILING.
 EXTERIOR. 1/2" DROP SIDING.
 CEILING HEIGHT. WAITING RM. 11'-5" FET. 10'-11".
 LIGHTING. LAMPS.
 SANITARY FACILITIES. OUTSIDE TOILETS.

NORTHERN DIV.
 PARSONS SUB
 STA. M 129



FLOOR PLAN.
 SCALE 1/16" = 1'-0".



PASSENGER STATION.
 MINDEN. MO.

MAY 8 1917