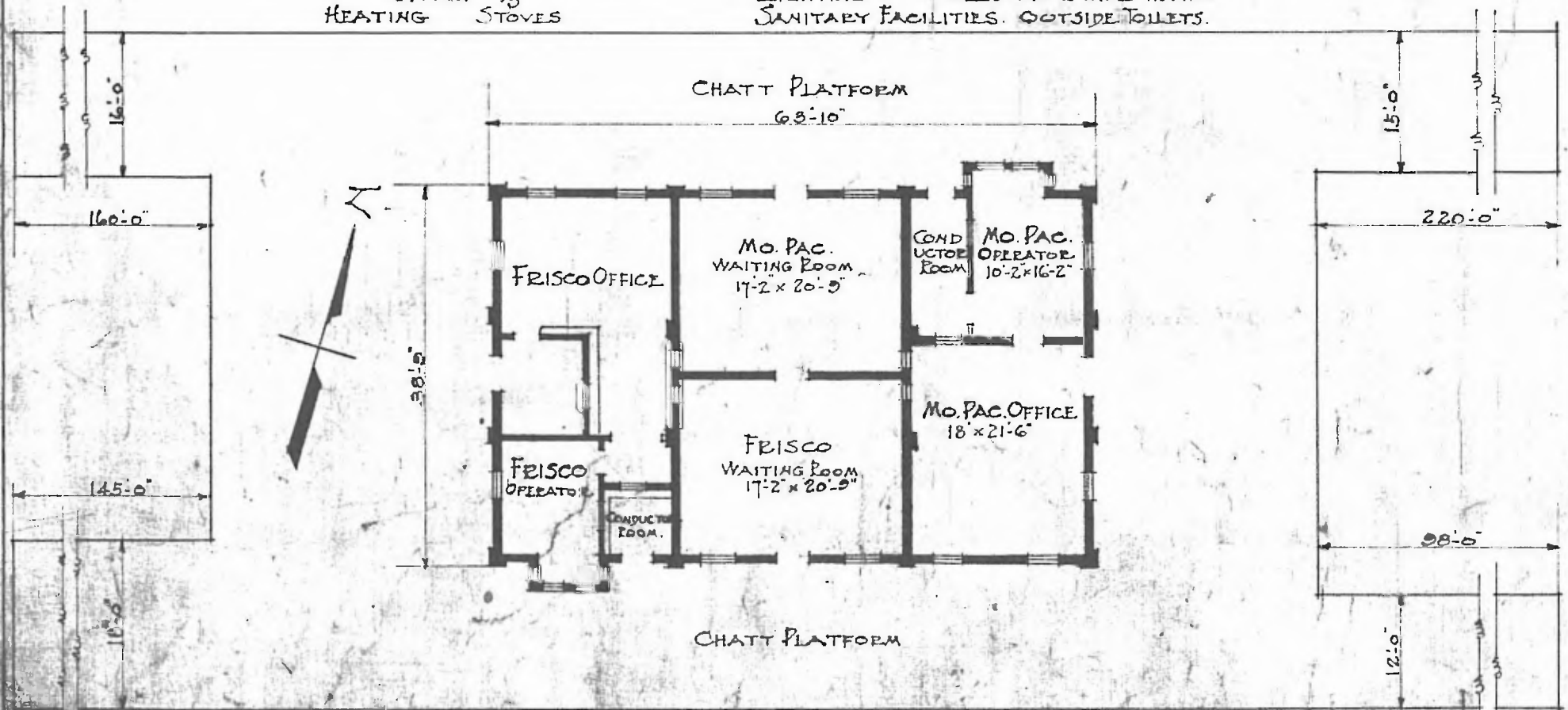


24

EASTERN DIV.  
ROLLA SUB  
STA. No. 34

ERECTED 1868  
TYPE BRICK  
FOUNDATION STONE  
WALLS 13"  
ROOF { TYPE GABLE. METAL SHINGLE  
PITCH 1/3  
HEATING STOVES

FLOOR 7/8" x 3 1/4" MO. PAC. CONCRETE.  
FINISH { INSIDE - PLASTER  
OUTSIDE - BRICK  
CEILING HEIGHT 14'-8"  
LIGHTING ELECTRIC 2 WIRE 110 A.C.  
SANITARY FACILITIES. OUTSIDE TOILETS.



JOINT FRISCO & MO. PACIFIC  
PASSENGER STATION  
PACIFIC, MO.

FLOOR PLAN  
SCALE 1/16"