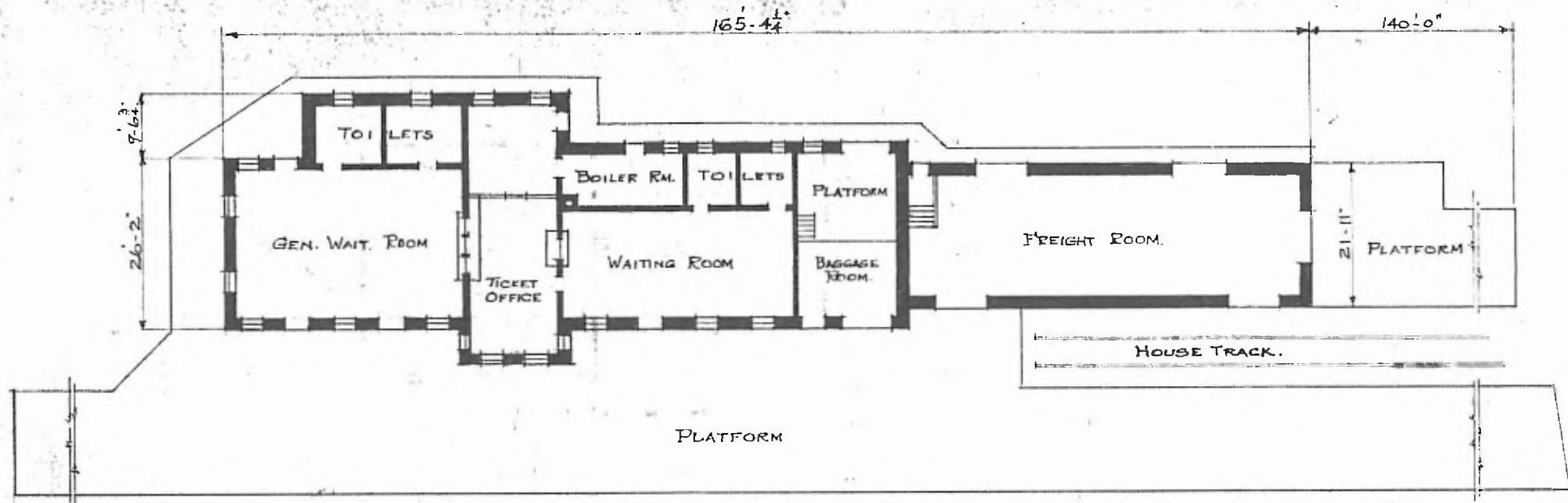


ERECTED 1924
 TYPE BRICK
 FOUNDATION CONCRETE
 WALLS 13"
 ROOF { TYPE GABLE BRICK
 PITCH $\frac{1}{3}$
 HEATING STOVES

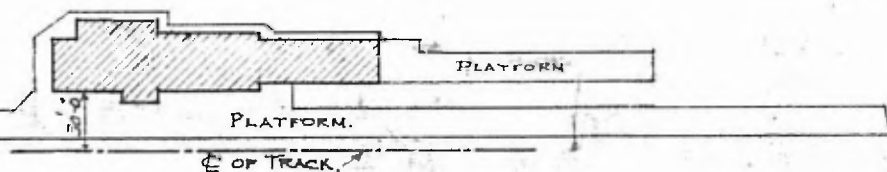
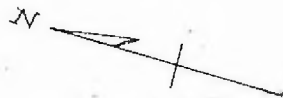
FLOOR WOOD & CEMENT
 FINISH { INSIDE BRICK & PLASTER
 OUTSIDE BRICK
 CEILING HEIGHT WAITING RM. = 11'-0 $\frac{5}{8}$ " FREIGHT ROOM = 11'-4"
 LIGHTING ELECTRIC.
 SANITARY FACILITIES OUTSIDE TOILETS

RIVER DIV.
 CHAFFEE SUB
 STA. No. T 166

(27)



FLOOR PLAN
 SCALE 1" = 24'0"



PLOT PLAN
 SCALE 1" = 100'

REVISED JUNE 16, 24.
 AUG. 29, 1918.

COMBINATION STATION
 SIKESTON, MO.