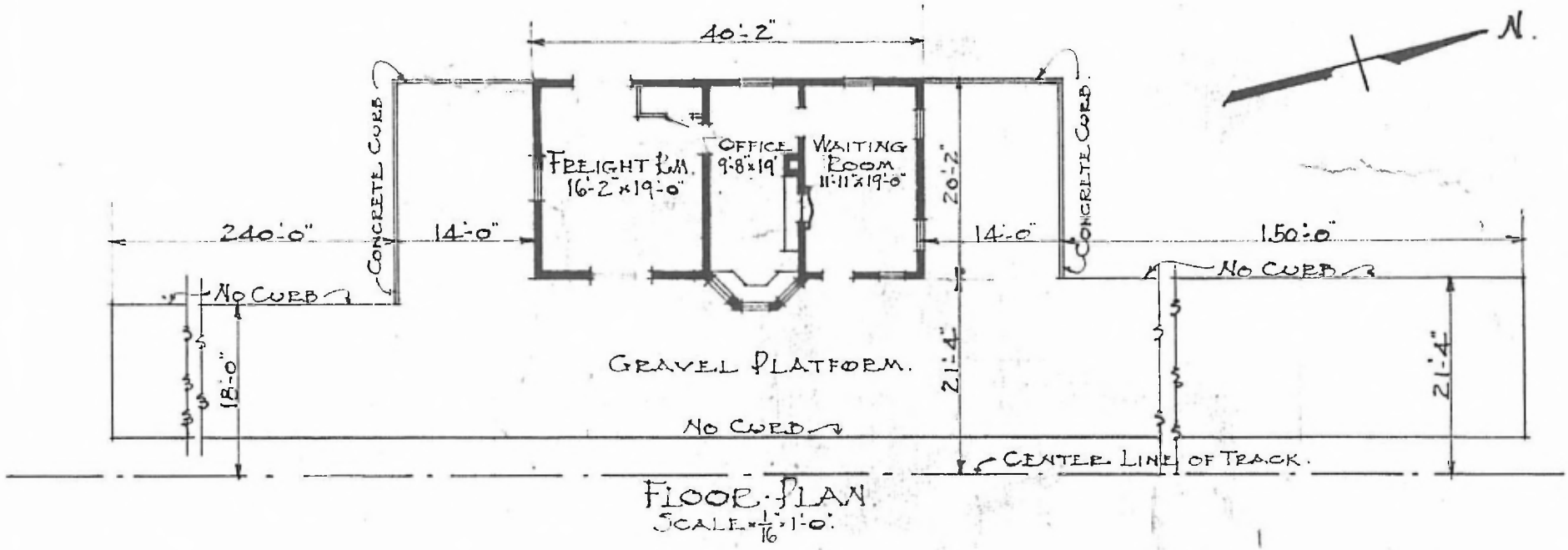


34

ERECTED 1916.
 TYPE. FRAME.
 FOUNDATION CONCRETE.
 WALLS. 2"x6"
 ROOF { TYPE. HIP. SHINGLE
 PITCH. 3 1/2" PER FT.
 HEATING. STOVES.

FLOOR 2" x 3 1/2" PINE.
 FINISH { INSIDE 2" x 3 1/4" V. JOINT.
 OUTSIDE. DROP SIDING.
 CEILING HEIGHT. 11'-6"
 LIGHTING. LAMPS.
 SANITARY FACILITIES. OUTSIDE.

EPSTEIN DIV.
 ROLLER SUB
 STD. No. 62



PASSENGER STATION
 STANTON, MO.

JAN. 20. 1917.