

**The Gideon - Anderson Co.**  
 MANUFACTURERS OF  
**Hardwood Lumber**  
 AND  
**Slack Cooperage Stock**  
 GENERAL OFFICES  
 Band Saw Mills and Planing Mills  
 GIDEON, MO.  
 SALES OFFICE  
 AND DISTRIBUTING YARD:  
 110 Angelica Street  
 Telephone: TYler 0011—TYler 0012  
 ST. LOUIS, MO.

**High Grade Machine Tools**  
*American Lathes and Radials*  
**Norton Grinders**  
*Milwaukee Millers*      *Nazel Hammers*  
*Libby Lathes*      *King Boring Mills*  
*Sellers Heavy Tools*  
  
**Pels Punches and Shears**  
*Watson-Stillman Hyd. Machy.*  
**BLACKMAN - HILL & CO.**

**Unxld**  
**Railroad Fusees**  
**INSURE SAFETY**  
*Best by Every Test*  
**UNEXCELLED MANUFACTURING**  
**COMPANY, Inc.**  
 NEW YORK, N. Y.

**Owens Paper Box Co.**  
 413-415 N. First  
 SAINT LOUIS  
  
 MANUFACTURERS  
 OF  
**PLAIN AND FANCY BOXES**

**PENSACOLA CREOSOTING COMPANY**  
 PENSACOLA, FLORIDA  
 Specializing in the Manufacture and Treatment of the following Forest Products  
**PILING    CROSS TIES    POLES    CROSS ARMS    CONDUITS**  
**LUMBER and STRUCTURAL TIMBERS**  
 on M. S. B. & P. R. R.  
 Your Inquiries Solicited—Cost Estimates Gladly Furnished  
 Cable Address: "PENCREO"      Shipments: Rail or Water

APPROVED BONDED ROOFERS FOR AMERICAN TAR PRODUCTS CO.  
**BIRMINGHAM FURNACE & ROOFING CO., INC.**  
 ROOFING, HEATING AND SHEET METAL CONTRACTORS  
 213 South 13th Street      Phone 4-0775  
**BIRMINGHAM, ALA.**

**Headlight Headquarters**  
 Headlights  
 and Turbo-generators  
 Train Lighting Systems  
 Train Control Turbo-generators  
 Fittings and Wiring Appliances  
 for Locomotive, Car and Shop  
 Installations  


**Crowe Coal Company**  
 General Office: Dwight Bldg.  
 KANSAS CITY, MISSOURI  
 ..♦♦♦..  
**Miners and Shippers**  
 ..♦♦♦..  
 Mines Located at Mulberry and  
 Scammon, Kansas, and Henryetta  
 Oklahoma, on the line of the St.  
 Louis-San Francisco Ry. Co.

**"HERCULES"**  
 —Red-Strand—  
**WIRE ROPE**  
 Made Only By  
**A. Leschen & Sons Rope Co.**  
 ST. LOUIS  
 Tough  
 Strong  
 Safe  
 Durable  
  
 Branches  
**NEW YORK**  
**CHICAGO**  
**DENVER**  
**SAN FRANCISCO**

**The Pyle-National Company**  
 1334-1358 North Kostner Ave.  
 Chicago, Ill., U. S. A.  
 CANADIAN AGENTS:  
 The Holden Company, Ltd., Montreal,  
 Winnipeg, Vancouver, Toronto  
 EXPORT DEPARTMENT:  
 International Railway Supply Company,  
 30 Church Street, New York City  
 BRANCH OFFICES:  
 3509 Grand Cen. Terminal, New York City  
 815 Boatmen's Bank Bldg., St. Louis, Mo.  
 311 Builders Ex. Bldg., St. Paul, Minn.

**St. Louis Surfacers and Paint Company**  
**RAILROAD PAINTS, VARNISHES**  
**ENAMELS**  
**Arlington Ave. and Terminal Belt Ry.      ST. LOUIS, MO.**

# BIND YOUR RECORDS

into Permanent Books



Adopted by general and local offices of every large railroad in the United States



BINDING MACHINES  
PERMANENT BINDERS  
LOOSE-LEAF DEVICES FOR ALL PURPOSES



## McBee Binder Co.

New York    St. Louis    Athens  
Cleveland    Chicago

# GRIDER COAL SALES AGENCY

Mine Agents

OVER 3,000,000 TONS ANNUALLY  
BEST GRADES ALABAMA STEAM AND DOMESTIC COALS

*Railroad Fuel a Specialty*

1414-18 American Trust Bldg., Birmingham Ala.

MINES ON THE FRISCO AT CARBON HILL, ALABAMA

## MOSS & McCORMACK

MINERS AND SHIPPERS

**COAL** Blacksmith, Bunker, Steam, Domestic—**COAL**

1901-4 American Trust Building

BIRMINGHAM, ALA.



## Independent Gravel Company

PRODUCERS

Crushed and Ground Carthage Limestone  
Joplin Chat — Flint Sand — Crushed Flint  
JOPLIN, MO.



### The FRISCO

uses NATIONAL TRAIN CONTROL and will be glad to give others the facts and figures on its Simplicity, Reliability, Low Cost and Low Maintenance.

## The National Safety Appliance Co.

Railway Exchange Bldg. — CHICAGO, ILL.  
17 Post Street — SAN FRANCISCO, CAL.

## International Business Machines Corporation



Tabulating & Accounting Machines  
Time Recorders — Scales  
50 Broad St.    NEW YORK, N. Y.

## John V. Boland Construction Co.

CHIMNEYS, CONCRETE and BRICK FURNACES  
OIL STILLS and BOILER SETTINGS  
CHICAGO OFFICE: Stock Exchange Bldg.  
Chemical Bldg.    ST. LOUIS, MO.

## Duner Car Closets

Enameled Iron Wet or Dry Closets  
**DUNER CO.**  
101 S. Clinton St.    CHICAGO  
For detailed description see Car Builders  
Cyclopedia 1922 Edition

## FT. SMITH ICE AND COLD STORAGE CO.

COLD STORAGE FOR ALL PERISHABLE MERCHANDISE  
Storage Capacity, 125 Cars  
Daily Ice Making Capacity, 125 Tons  
FORT SMITH - - ARKANSAS

## Wise Buchanan Coal Co.

MINERS and SHIPPERS

HENRYETTA - OKLAHOMA

## MORGAN HILL CO.

GENERAL CONTRACTORS

Shovel and Drag Line Work

Woodward Bldg.    BIRMINGHAM

## Warden Pullen Coal Co.

MINERS and SHIPPERS

HENRYETTA - OKLAHOMA

## SERVICE ICE COMPANY

Successors to  
HAMMOND BROS. ICE & COLD STORAGE COMPANY  
Eastern Junction, Frisco Railway  
SPRINGFIELD, MO.  
WHOLESALE ONLY—CAR LOADS  
W. E. OGSTON, President and Treasurer

## Oklahoma Steel Castings Co.

MAKERS OF

Railroad, Oil Field and Commercial Castings in

## OKLAHOMA ELECTRIC STEEL

Tulsa, Okla., Box 658

# National Boiler Washing Co.

OF ILLINOIS

## CONTRACTORS

NATIONAL HOT WATER  
WASHOUT AND FILLING  
SYSTEMS  
for LOCOMOTIVE BOILERS

...and...

NATIONAL FUEL OIL  
FACILITIES for  
LOCOMOTIVE TERMINALS  
CONSTRUCTED COMPLETE

RAILWAY EXCHANGE  
CHICAGO

# ATLAS COAL

Henryetta Fuel Company

Henryetta, Oklahoma

McALESTER, WILBURTON  
COLORADO

and

# HENRYETTA

## CHAS. R. LONG, JR. COMPANY

LOUISVILLE — CHICAGO — ST. LOUIS

*Manufacturers of*

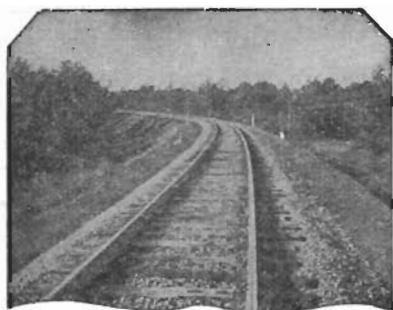
All Kinds of Railway and Industrial  
Paints, Varnishes and Lacquers

## VILOCO RAILWAY EQUIPMENT CO.

CHICAGO

*For Dependable Service*

- "VILOCO" Pressed Steel Brake Step
- "VILOCO" Automatic Rail Washer
- "VILOCO" Bell Ringer
- "VILOCO" Exhaust Pipe
- "VILOCO" Improved Sander
- "VILOCO" Floating Journal Bearing



*For better concrete  
culverts and bridges*

Photo, above, shows part of "50 miles of excellent track" between Carbon Hill and Birmingham in which

"ENSLEY" & "ALA CITY"  
**BASIC SLAG**  
CRUSHED & SCREENED

was used exclusively as road ballast. The Frisco Railway has used thousands of tons of basic slag for road ballast in the Birmingham-Memphis division—and each year hundreds of tons goes into the building of concrete bridges and culverts.

**Birmingham Slag Co.**

Slag Headquarters for the South  
BIRMINGHAM, ALA.

## The New York Air Brake Company

Manufactures the

### STANDARD AIR-BRAKE EQUIPMENT

GENERAL OFFICES  
420 Lexington Av., New York City  
WORKS  
Watertown, New York

## The Starr Coal Co.

MINERS and SHIPPERS

HENRYETTA - OKLAHOMA

## ROQUEMORE GRAVEL CO.

MONTGOMERY, ALA.

The South's Largest Producers of  
**SAND AND GRAVEL**

SALES OFFICES:  
Lincoln Life Bldg., Bona Allen Bldg.  
Birmingham, Ala. Atlanta, Georgia

## Single Plate

Chilled Tread Wheels

WITH

REINFORCED FLANGES

FOR

THE MOST SEVERE SERVICE

OVER 500,000 IN SERVICE

**Southern Wheel Co.**

## The Producers Sand Co.

Producers and Shippers of the  
"HOUND TOOTH SAND"

SCREENED AND WASHED  
BIG ARKANSAS RIVER CHANNEL SAND  
307 National Bank of Commerce Building  
Telephone 3-4272 P. O. Box 2133

TULSA, OKLAHOMA

## The Locomotive Finished Material Co.

ATCHISON, KANSAS

FOUNDERS and ENGINEERS  
High Grade Grey Iron and Steel Castings  
for Railways—Finished or Rough  
Finished Locomotive Cylinders a Specialty  
Equipped to make large Grey Iron  
Castings up to 25 tons.

## The Pittsburg & Midway Coal Mining Co.

### COAL OPERATORS

General Sales Office  
DWIGHT BUILDING  
KANSAS CITY, MO.

## Brookside-Pratt Mining Co.

INCORPORATED

A. R. Long, President  
Albert Allison, Secretary-Treasurer

PRODUCERS OF

Steam and Domestic Coal

Mines on Frisco, Southern and  
I. C. Railroads

Brown-Marx Building  
BIRMINGHAM, ALA.

## W. H. (Bill) REAVES

1169 Arcade Bldg. St. Louis

REPRESENTING

The P. & M. Company  
Rail Anchors

The National Lock Washer Co.  
Improved Hipower

Maintenance Equipment Co.  
Labor Saving Devices

## Cast Steel Spring Bands That Are Effecting Large Savings

**R**AILROADS using our cast steel spring bands report a saving over the cost of manufacturing wrought iron bands in their own shops. Wrought iron bands crease in the corners; the iron is burnt in forging; they are not uniform in thickness, and there is considerable loss due to imperfect welds.

Cast steel bands have solid corners, are free from burning, are of uniform thickness, and require no welding.

The strength of these bands compare as follows:

Tensile Strength	Elastic Limit
lb. per sq. in.	lb. per sq. in.
Wrought Iron Bands— 40,000	25,000
Cast Steel Bands— 70,000	36,000

We can effect a saving in manufacturing cost and insure long wearing bands that are free from failures.

Send Us Your Spring Band  
Designs

## Standard Brake Shoe & Foundry Co.

Railway Steel and Iron Products  
Pine Bluff, Arkansas

## LAYNE WELL SYSTEMS

ARE DEPENDABLE

AMERICA'S GREATEST RAILROADS  
USE THEM

*Municipalities and Industries find them profitable*

### LAYNE & BOWLER, INC.

HOUSTON

MEMPHIS

LOS ANGELES

## C. G. Kershaw Contracting Co.

INCORPORATED



GENERAL CONTRACTORS



607 Woodward Bldg.

Birmingham, Alabama

## Sherrill Oil Co.

GASOLINE, KEROSENE, OILS

Fuel Oil in Cars or Over Docks

PENSACOLA, FLORIDA

## Vulcan Rivet Corporation

BIRMINGHAM, ALA.

RIVETS — TRACK SPIKES

Works and Office: Dolcito Junction, Ala.

MEMPHIS BRIDGE ON THE FRISCO  
PAINTED BY

### A. GERSKE CONTRACTOR

PAINTING BRIDGES, BUILDINGS AND  
ALL STRUCTURAL STEEL

1008 Hearst Building  
326 W. MADISON ST., CHICAGO, ILL.

## Hedges-Weeks Construction Co.

Rooms 415-416 Holland Building

Railroad Masonry Contractors  
SPRINGFIELD, MO.

Your

# Fire Pail and Barrel Equipment

Becomes  
Much More  
Effective  
when

# SOLVAY CALCIUM CHLORIDE

is added to the water

*Write today for prices and valuable  
booklet on fire extinguishing  
systems.*

*Ask for booklet 8255.*

**SOLVAY SALES CORPORATION**

*Alkalies and Chemical Products  
Manufactured by The Solway  
Process Company.*

**40 Rector Street      New York**

# SPRINGS

LOCOMOTIVE AND CAR WHEEL TIRES  
TIRE MILL PRODUCTS      STEEL-TIRED WHEELS  
PRESSED STEEL JOURNAL BOX LIDS

## Railway Steel-Spring Company

General Office: 30 Church Street, New York  
BRANCH OFFICES—SOUTHWESTERN DISTRICT  
915 Olive St., St. Louis, Mo.      Praetorian Bldg., Dallas, Texas

FOR GOOD SERVICE

## HYMAN-MICHAELS CO., St. Louis, Mo.

Rails, Rolling Stock, Track Equipment

HOUSTON      NEW YORK      SAN FRANCISCO  
Home Office, 122 S. MICHIGAN AV., CHICAGO, ILL.

## ANDERSON-PRICHARD OIL CORP.

REFINERS OF

INDUSTRIAL NAPHTHAS

OKLAHOMA CITY, OKLA.

# REID AND LOWE

RAILROAD AND  
BRIDGE CONTRACTORS

**Grading and Concrete Bridge Work**

**BIRMINGHAM, ALA.**

The Frisco Policy to guarantee the safety of their employes  
is further carried out by their purchase of

# Marathon Brand Sterilized Wiping Rags



## G. MATHES COMPANY

St. Louis, U. S. A.